

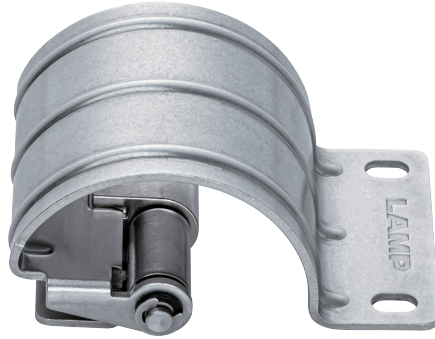
ONE WAY CONCEALED TORQUE HINGE (WIDE OPENING)



HG-TQWA15

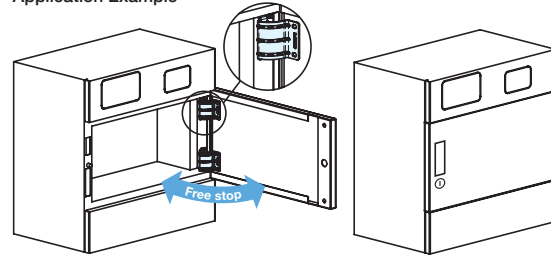
HINGES

CONCEALED TORQUE HINGE

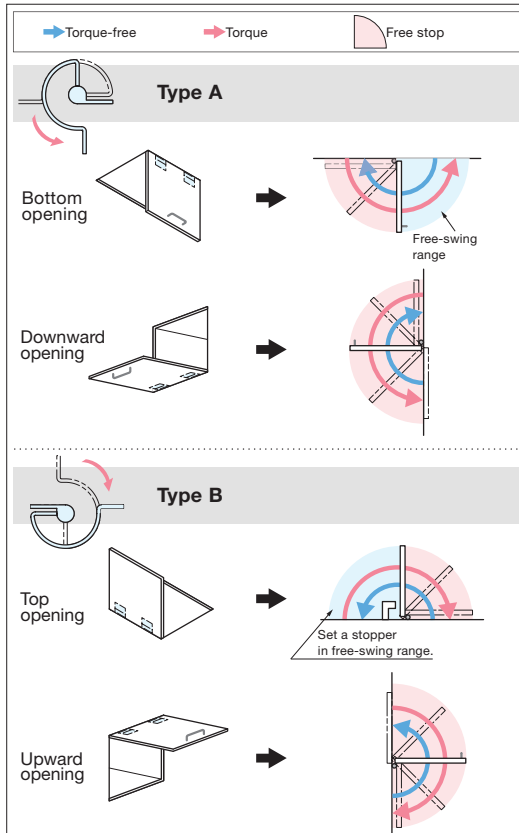


- Torque applied to hold door in any desired position (Freestop).
- Select from two available options to best support your application:
  - Type A: has torque (free stop) in opening direction.
  - Type B: has torque (free stop) in closing direction.
- Hinge is hidden (concealed) from the outside of the door.
- Can be used horizontally or vertically. 130° Wide Opening.
- Durability: successfully passed 20,000 open/close private cycles.
- Ideal for medical or analytical equipment, automation devices, maintenance on various manufacturing equipment.

Application Example

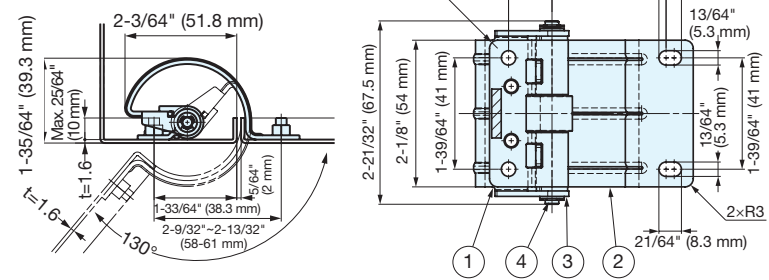


Torque Direction and Free-stop Range



\*Figure shows torque direction.  
Check the actual opening and closing angles in the Reference Dimensions.

Reference Dimensions



No.	Part Name	Material	Finish
①	Body	304 Stainless Steel	Barrel Polished
②	Base		
③	Fixing Tube	Polyacetal (POM)	Black
④	Shaft	Stainless Steel	-
⑤	Housing	Zinc Alloy	Nickel

Item No.	Torque Working Direction	Torque	Weight (g)	Box (pcs)	Carton (pcs)
HG-TQWA15-A	Opening Direction	13.2 <sup>+40%</sup> / <sub>-20%</sub> lbs-in (15.3 <sup>+40%</sup> / <sub>-20%</sub> kgf-cm)	183	10	500
HG-TQWA15-B	Closing Direction				