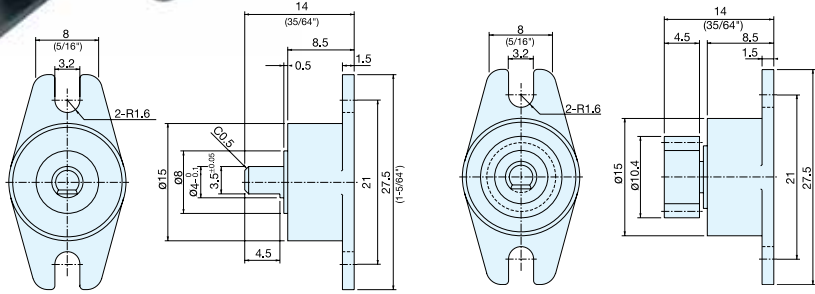


# ROTARY DAMPER (ONE/TWO WAY)

# SRT-C2, SRN-C2

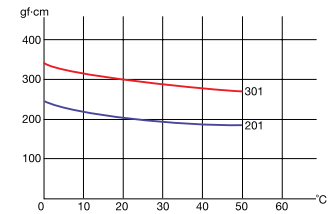
Special Order



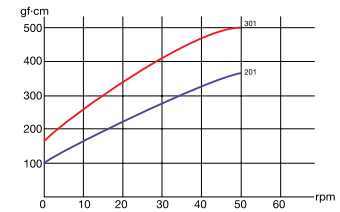
Without Gear

With Gear

Torque at Different Temperature (20rpm)



Torque at Different Speed (23°C/73°F)



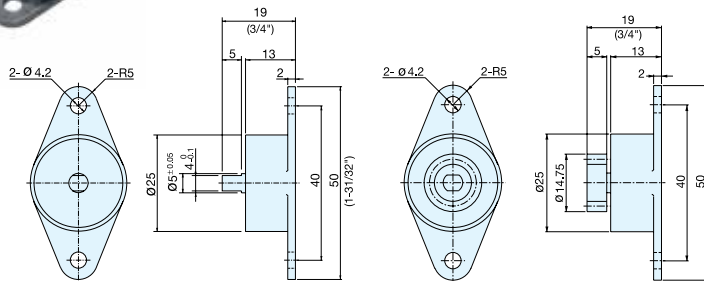
Part Name	Material	
	SRT-C2	SRN-C2
Body	Polycarbonate	
Shaft	Polyacetal	303 Stainless Steel
Gear	Polyacetal	
Gear Specification		
Type	Standard Spur Gear	
Tooth	Involute (Full)	
Module	0.8 mm	
Pressure Angle	20°	
Number of Teeth	11	
Pitch Circle Diameter	8.8 mm	

Item No.	Gear	Torque (gf-cm)	Dampening Direction	Weight (g)	Box (pcs)	Carton (pcs)
SRT-C2-201	Without	200 (2.78 in-oz)	Two Way	2.1	500	1000
SRT-C2-201G1	With			2.4		
SRT-C2-301	Without	300 (4.17 in-oz)	Clockwise	2.1		
SRT-C2-301G1	With			2.4		
SRN-C2-R301	Without		Counter Clockwise	3.2		
SRN-C2-R301G1	With			3.5		
SRN-C2-L301	Without	3.2	Counter Clockwise	3.2		
SRN-C2-L301G1	With			3.5		

# ROTARY DAMPER (ONE/TWO WAY)

# SRT-D2, SRN-D2

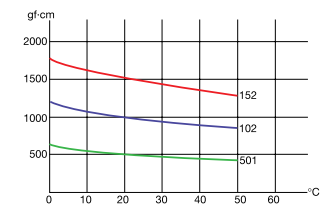
Special Order



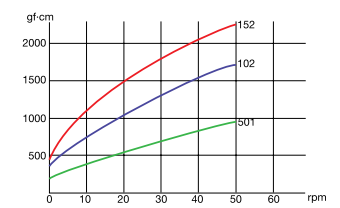
Without Gear

With Gear

Torque at Different Temperature (20rpm)



Torque at Different Speed (23°C/73°F)



Part Name	Material	
	SRT-D2	SRN-D2
Body	Polycarbonate	
Shaft	Polyacetal	420 Stainless Steel
Gear	Polyacetal	
Gear Specification		
Type	Modified Spur Gear	
Tooth	Involute (Full)	
Module	1 mm	
Pressure Angle	20°	
Number of Teeth	12	
Pitch Circle Diameter	12 mm	

\*Add "G2" after item number to order damper with gear.

Item No.	Torque (gf-cm)	Dampening Direction	Weight (g)	Box (pcs)	Carton (pcs)
SRT-D2-501	500 ( 6.94 in-oz)	Two Way	8.3 (With Gear:8.9)	100	500
SRT-D2-102	1000 (13.89 in-oz)				
SRT-D2-152	1500 (20.83 in-oz)				
SRN-D2-R501	500 ( 6.94 in-oz)	Clockwise	11.8 (With Gear:12.4)		
SRN-D2-L501		Counter Clockwise			
SRN-D2-R102	1000 (13.89 in-oz)	Clockwise			
SRN-D2-L102		Counter Clockwise			
SRN-D2-R152	1500 (20.83 in-oz)	Clockwise			
SRN-D2-L152		Counter Clockwise			