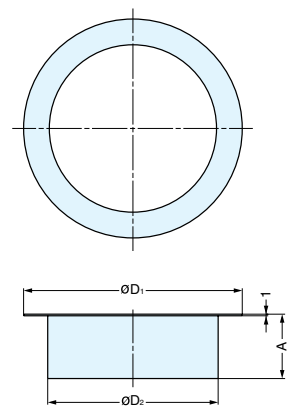
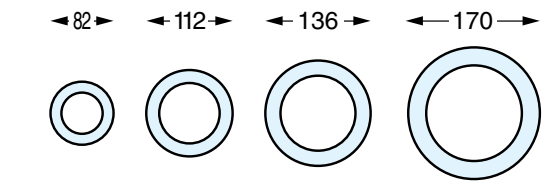
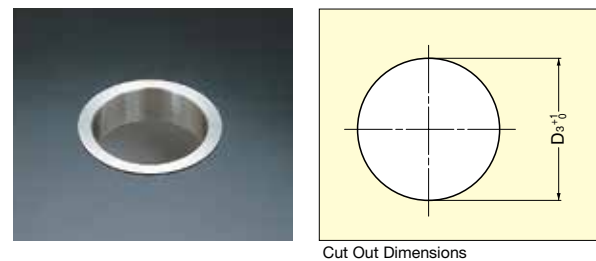


MULTI-PURPOSE GROMMET



AN-DH, AN-LH

- Corrosion resistant.
- Wide range of sizes and finishes.



ENCLOSURE COMPONENTS
MULTI-PURPOSE GROMMET

Item No.	A	D ₁	D ₂	D ₃	Material	Finish	Weight (g)
AN-DH005-GP	36	82 (3-15/64")	58 (2-9/32")	59 (2-21/64")	Stainless Steel (SUS 304)	Gold	66
AN-DH005-MR						Mirror	
AN-DH005-HL		Satin					
AN-DH008-GP		Gold					
AN-DH008-MR	112 (4-13/32")	82 (3-15/64")	83 (3-17/64")	Mirror		107	
AN-DH008-HL	Satin						
AN-DH011-GP	40	136 (5-23/64")	106 (4-11/64")	107 (4-7/32")		Gold	137
AN-DH011-MR						Mirror	
AN-DH011-HL					Satin		
AN-DH015-GP	36	170 (6-11/16")	146 (5-3/14")	147 (5-25/32")	Gold	182	
AN-DH015-MR					Mirror		
AN-DH015-HL					Satin		

Item No.	A	D ₁	D ₂	D ₃	Material	Finish	Weight (g)
AN-LH005-GP	22	82 (3-15/64")	58 (2-9/32")	59 (2-21/64")	Stainless Steel (SUS 304)	Gold	50
AN-LH005-MR						Mirror	
AN-LH005-HL						Satin	
AN-LH008-GP						Gold	
AN-LH008-MR		112 (4-13/32")	82 (3-15/64")	83 (3-17/64")		Mirror	77
AN-LH008-HL		Satin					
AN-LH011-GP		136 (5-23/64")	106 (4-11/64")	107 (4-7/32")		Gold	92
AN-LH011-MR						Mirror	
AN-LH011-HL						Satin	
AN-LH015-GP		170 (6-11/16")	146 (5-3/14")	147 (5-25/32")		Gold	122
AN-LH015-MR						Mirror	
AN-LH015-HL						Satin	