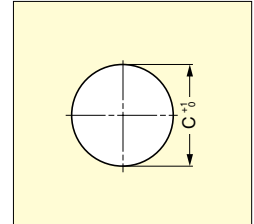
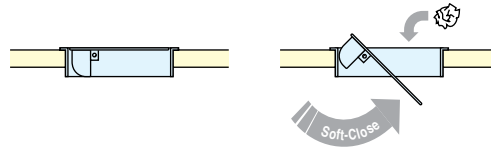


MULTI-PURPOSE LID (SOFT CLOSE)

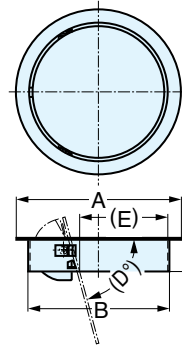
STAINLESS
304
STEEL

AD-GD

- Soft and slow closing movement with a built-in damper mechanism.
- Horizontal use only.



Cut Out Dimensions



Material	Finish
304 Stainless Steel	Satin
303 Stainless Steel	
Polyacetal	
Steel	
CRC	
NBR (Rubber)	

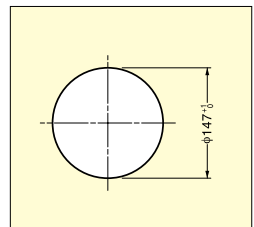
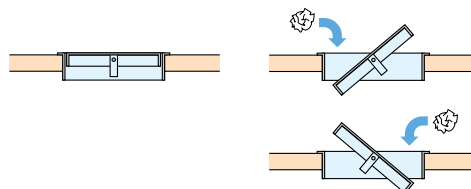
Item No.	A	B	C	D	E	Weight (g)	Box (pcs)	Carton (pcs)
AD-GD011-HL	136 (5-23/64")	106 (4-11/64")	107 (4-7/32")	87 (3-27/64")	62 (2-7/16")	460	1	10
AD-GD015-HL	170 (6-11/16")	146 (5-3/4")	147 (5-25/32")	75 (2-61/64")	90 (3-35/64")	1000		

MULTI-PURPOSE LID

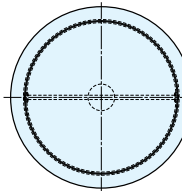
STAINLESS
304
STEEL

AD-DH015-HL

- Self-leveling lid.
- Horizontal use only.



Cut Out Dimensions



Item No.	Weight (g)	Box (pcs)	Carton (pcs)	Material	Finish
AD-DH015-HL	554	1	10	304 Stainless Steel	Satin