

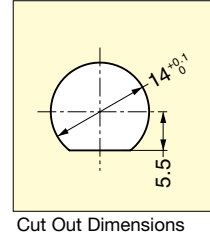
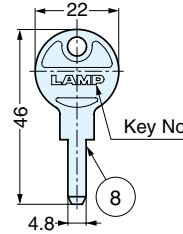
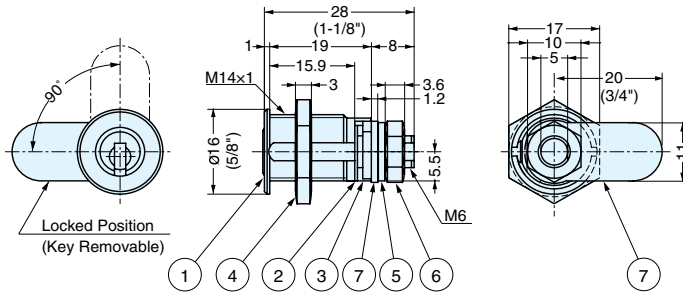
# SHEET METAL CAM LOCK



**910MS**



- Mini cylinder lock for sheet metal applications.
- Reversible key.
- 90 degree cam rotation.
- Key is removable in locked position only.
- Up to 47,000 key changes available.
- Master key available at surcharge.  
(Maximum 1,000 key changes per master key)



Item No.	Metal Thickness	Keys Included	Weight (g)
910MS	0.8 ~ 12.0 (1/32" ~ 1/2")	2	25.5

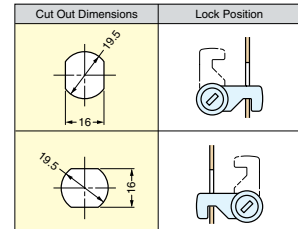
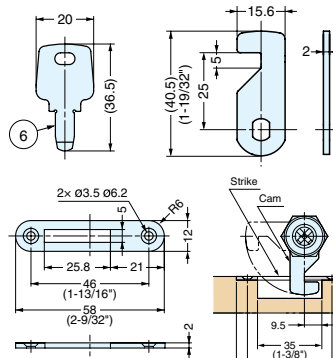
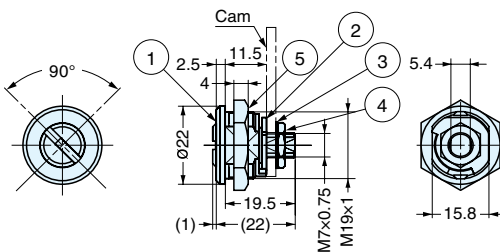
No.	Part Name	Material	Finish
①	Body	Brass	Chrome
②	Ring	Steel	Yellow Zinc Chromate
③	Stop Washer		
④	Hex Nut		
⑤	Plate		
⑥	Cam Nut		
⑦	Cam	Brass	Chrome
⑧	Key		

# CAM LOCK

**DIS-022R-D**



- Thin cylinder lock with dimple key.
- Reversible key can be removed when locked and unlocked (90° rotation).
- Cam and strike are sold separately.
- Stainless cam DIS-010 is sold separately.
- Stainless strike DIS-011 is sold separately.



■ Body

Item No.	Item Name	Key Type	Door Thickness	Weight (g)	Box (pcs)
150-018-944	DIS-022R-D	Key Alike	Max. 5	50	50

■ Cam (Sold Separately)

Item No.	Item Name	Material	Finish	Weight (g)
180-018-598	DIS-010	Stainless Steel (SUS304)	Polished	7

■ Strike (Sold Separately)

Item No.	Item Name	Material	Finish	Weight (g)
180-018-599	DIS-011	Stainless Steel (SUS304)	Polished	7

No.	Part Name	Material	Finish
①	Body	Brass	Chrome
②	Cam	Steel (SPCC)	Yellow Zinc Chromate
③	Washer	Steel	
④	M7 Hex Nut		
⑤	M9 Hex Nut	Zinc Alloy (ZDC)	
⑥	Key	Brass	