

SHEET METAL CAM LOCK (MAGNETIC KEY SYSTEM)



NO990

LOCKS

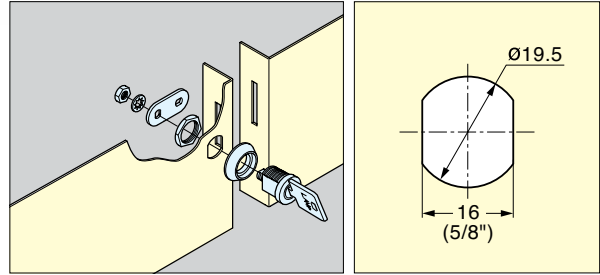
- Magnetic key system for high security.
- 90 degree cam rotation.
- Key is removable in locked position only.
- Maximum 40,000 key changes available.



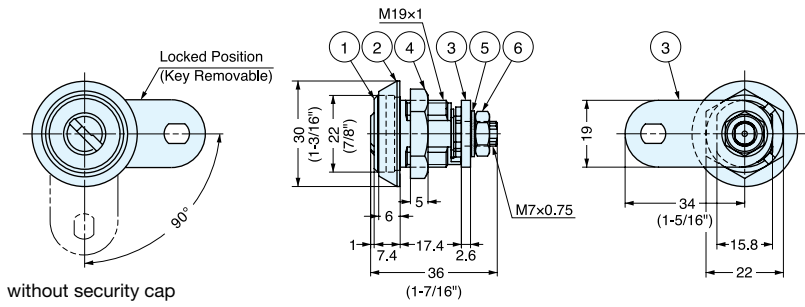
NO990R-B



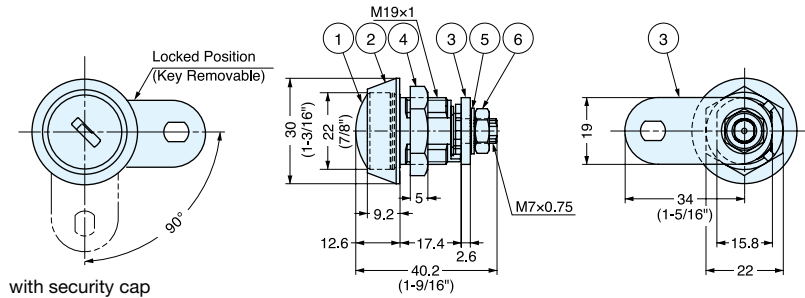
NO990VC-B



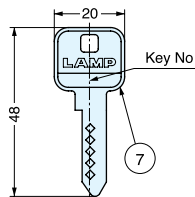
Cut Out Dimensions



NO990R-B



NO990VC-B



No.	Part Name	Material	Finish
①	Body	Brass	Chrome
②	Ring		
③	Cam	Steel	Yellow Zinc Chromate
④	Hex Nut	Zinc Alloy	Chrome
⑤	Washer	Steel	Yellow Zinc Chromate
⑥	Cam Nut		
⑦	Key	Brass/Ferrite	Nickel

Item No.	Metal Thickness (mm)	Security Cap	Keys Included	Weight	Box (pcs)
NO990R-B	0.8 ~ 8.0	Without security cap	2	103	1
NO990VC-B	(1/32" ~ 5/16")	With security cap		109	

SHEET METAL CAM LOCKS