

LOW PROFILE HEAVY DUTY CASTER



LOAD CAPACITY
408-816 kg
898-1795 lbs

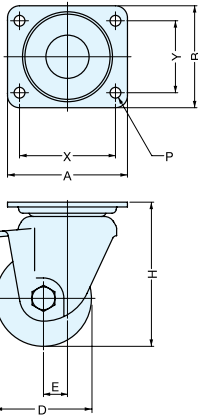
UHG



- Low profile and heavy duty up to 816 kg (1795 lbs), ideal for manufacturing equipment.
- Sealed heavy duty ball bearing swivel assembly provides smooth and long-term service.
- Hexavalent chromium free. Using trivalent chromium for RoHS compliance.
- Optional wheel types: Phenolic, Reinforced Nylon, MC Nylon or Electro-conductive MC Nylon.

*Please specify wheel type when ordering.

Part Name	Material	Finish
Body/Mounting Plate	Steel	Clear Zinc Chromate (Trivalent Chromium)
Wheel	Phenolic Resin (PB)	Black
	Reinforced Nylon (GFB)	
	MC Nylon (MC)	
	Electro-conductive MC Nylon (MCE)	



Item No.	Bearing in wheels	D	Wheel Width	H	A
UHG-50 (PB,MC,MCE)	With Bearing	50	38 (1-1/2")	79 (3-7/64")	84 (3-5/16")
UHG-65 (PB,GFB,MC,MCE)		65		97 (3-13/16")	100 (3-15/16")
UHG-75 (PB,GFB,MC,MCE)		75	48 (1-57/64")	107 (4-7/32")	
UHG-80MC		80		120 (4-23/32")	
UHG-100MC		100		140 (5-33/64")	150 (5-29/32")

Item No.	B	X	Y	P	E	Swivel Radius	Load Capacity (kg)	Weight (g)	Box (pcs)	Carton (pcs)
UHG-50 (PB,MC,MCE)	84	64	64	8.5	11	49	408 (898 lbs)	820	20	200
UHG-65 (PB,GFB,MC,MCE)	100	78	78	10.5	14	57	510 (1122 lbs)	1540	12	120
UHG-75 (PB,GFB,MC,MCE)							612 (1347 lbs)	1625		
UHG-80MC	85	80	60	9.0	20	62	816 (1795 lbs)	1680	8	80
UHG-100MC	110	121	59	13.0				72		

LOW PROFILE HEAVY DUTY CASTER



LOAD CAPACITY
408-612 kg
897-1346 lbs

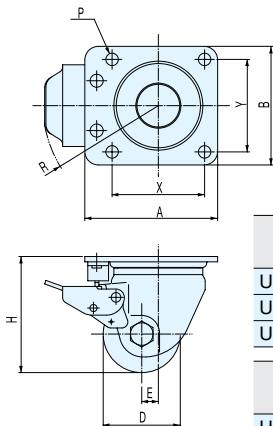
UHGK



- Low profile and heavy duty up to 612 kg (1346 lbs), ideal for manufacturing equipment.
- Sealed heavy duty ball bearing swivel assembly provides smooth and long-term service.
- Swivel Lock provides easy handling.
- Pull the lever up for rigid caster use, push down the lever for swivel caster use.
- Hexavalent chromium free. Using trivalent chromium for RoHS compliance.
- Optional wheel types from: Phenolic, MC Nylon or Electro-conductive MC Nylon.

*Please specify wheel type when ordering.

Part Name	Material	Finish
Body/Mounting Plate	Steel	Clear Zinc Chromate (*Trivalent Chromium)
Wheel	Phenolic Resin (PB)	Black
	MC Nylon (MC)	
	Electro-conductive MC Nylon (MCE)	



Item No.	Bearing in wheels	D	Wheel Width	H	A
UHGK-50 (PB,MC,MCE)	With Bearing	50 (1-31/32")	38 (1-1/2")	79 (3-7/64")	96 (3-25/32")
UHGK-65 (PB,MC,MCE)		65 (2-9/16")	48 (1-57/64")	97 (3-13/16")	112 (4-13/32")
UHGK-75 (PB,MC,MCE)		75 (2-61/64")		107 (4-7/32")	

Item No.	B	X	Y	P	E	Swivel Radius	Load Capacity (kg)	Weight(g)	Box (pcs)	Carton (pcs)
UHGK-50 (PB,MC,MCE)	84 (3-5/16")	64	64	8.5	12	83	408 (897 lbs)	822(PB),818(MC),824(MCE)	20	200
UHGK-65 (PB,MC,MCE)	100 (3-15/16")	78	78	10.5	14	98	510 (1122 lbs)	1559(PB),1540(MC),1549(MCE)	12	120
UHGK-75 (PB,MC,MCE)							612 (1346 lbs)	1660(PB),1644(MC),1641(MCE)		