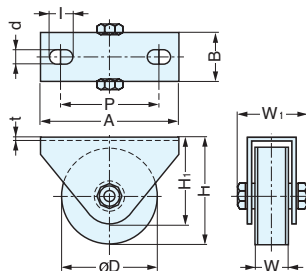


STAINLESS STEEL BEARING ROLLER (HEAVY DUTY/FLAT-SHAPE)



JS375



- Flat-shaped roller.
- Sealed bearing ideal for outdoor environment.
- Bracket has holes for fasteners or it also can be welded.

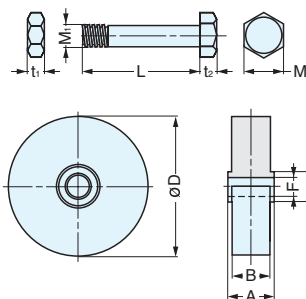
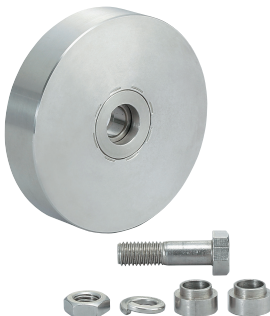
Item No.	Load Capacity (kgf/2cs)	D	W	W ₁	A	B
JS375-50F	400 (880 lbs)	50 (1-31/32")	20 (25/32")	47 (1-27/32")	100 (3-15/16")	30 (1-3/16")
JS375-60F	500 (1100 lbs)	60 (2-23/64")			120 (4-23/32")	
JS375-75F	650 (1430 lbs)	75 (2-61/64")				
JS375-90F	1200 (2640 lbs)	90 (3-35/64")				
JS375-110F	1400 (3080 lbs)	110 (4-21/64")	24 (15/16")	53 (2-3/32")	145 (5-45/64")	34 (1-11/32")
JS375-150F	2200 (4840 lbs)	150 (5-29/32")	43 (1-11/16")	88 (3-15/32")	250 (9-27/32")	57 (2-1/4")
JS375-200F	2800 (6160 lbs)	200 (7-7/8")	50 (1-31/32")	96 (3-25/32")	290 (11-27/64")	70 (2-3/4")

Item No.	F	H	H ₁	d	l	P	t	Weight (kg)
JS375-50F	7 (9/32")	62.0 (2-7/16")	57.0 (2-1/4")	11 (7/16")	15 (19/32")	75 (2161/64")	3 (1/8")	0.5
JS375-60F		67.0 (2-41/64")				85 (3-11/32")		0.6
JS375-75F		87.5 (3-7/16")	95 (3-47/64")			0.9		
JS375-90F		95.0 (3-47/64")	114 (4-31/64")			1.2		
JS375-110F	8 (5/16")	120.0 (4-23/32")	93.5 (3-11/16")	20 (25/32")	35 (1-3/8")	185 (7-9/32")	4 (5/32")	2.0
JS375-150F	15 (19/32")	165.0 (6-1/2")	137.0 (5-25/64")			216 (8-1/2")		6.5
JS375-200F	14 (35/64")	215.0 (8-15/32")	160.0 (6-19/64")			6 (15/64")		14.0

STAINLESS STEEL ROLLER (HEAVY DUTY/FLAT-SHAPE)



JS385



- Flat-shaped roller wheel for JS375.
- Sealed bearing ideal for outdoor environment.

*Measurement includes spring washer thickness

Item No.	D	A	B	F	F ₁
JS385-50F	50 (1-31/32")	24 (15/16")	20 (25/32")	10 (25/64")	18 (45/64")
JS385-60F	60 (2-23/64")				
JS385-75F	75 (2-61/64")				
JS385-90F	90 (3-35/64")				
JS385-110F	110 (4-21/64")	28 (17/64")	24 (15/16")	12 (15/32")	20 (25/32")
JS385-150F	*150 (5-29/32")	43 (1-11/16")	43 (1-11/16")	20 (25/32")	40 (1-37/64")
JS385-200F	*200 (7-7/8")	50 (1-31/32")	50 (1-31/32")	25 (63/64")	

Item No.	L	M	M ₁	t ₁	t ₂	Weight (kg)
JS385-50F	40 (1-37/64")	17 (43/64")	M10 (25/64")	6 (15/64")	7 (9/32")	0.3
JS385-60F						0.4
JS385-75F						0.6
JS385-90F						1.0
JS385-110F	45 (1-49/64")	19 (3/4")	M12 (15/32")	7 (9/32")	8 (5/16")	1.8
JS385-150F	75 (2-61/64")	30 (1-3/16")	M20 (25/32")	12 (15/32")	13 (33/64")	5.9
JS385-200F	86 (3-25/64")		M24 (15/64")	14 (35/64")	10 (25/64")	11.7