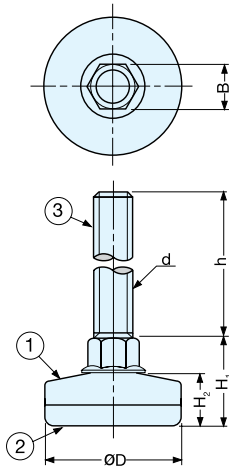


LEVELING GLIDE



LOAD CAPACITY
140 kg
308 lbs

TN



No.	Part Name	Material	Finish
①	Body	Steel	Chrome
②	Base	Polyethylene	Natural
③	Bolt	Steel	Yellow Zinc Chromate

Item No.	D	H ₁	H ₂	h	d
TN-25S	25.0 (63/64")	21.0 (53/64")	12.0 (15/32")	60 (2-23/64")	M10 × 1.5
TN-35S	35.0 (1-3/8")	22.5 (57/64")	13.5 (17/32")		
TN-45S	43.5 (1-23/32")				

Item No.	B	Load Capacity (kg)	Weight (g)	Box (pcs)	Carton (pcs)
TN-25S	13 (33/64")	140 (308 lbs)	50	50	500
TN-35S			60	30	300
TN-45S			70	20	260

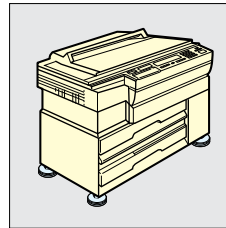
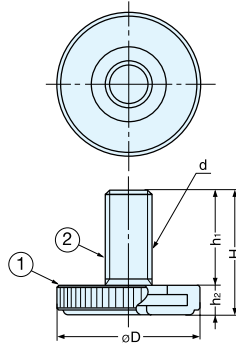
LEVELING GLIDE



LOAD CAPACITY
100-180 kg
220-396 lbs

TEST 12
P.472

TG



- Low profile leveling glide.
- Knurled rim for easy adjustment.
- Easy installation with Phillips screwdriver.

No.	Part Name	Material	Finish
①	Base	Polyamide	Dark Grey/White/Black
②	Bolt	Polyethylene	Yellow Zinc Chromate

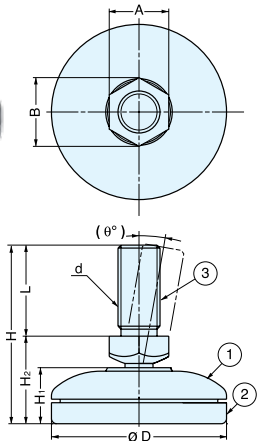
Item No.			D	H	h ₁	h ₂	d	Load Capacity (kg)	Weight (g)	Box (pcs)	Carton (pcs)
Dark Grey	White	Black	20 (25/32")	21 (53/64")	15 (19/32")	6 (15/64")	M8×1.25	100 (220 lbs)	11	120	720
TG-20	TG-20WT	TG-20GP-BL	30 (1-3/16")	26 (1-1/32")	20 (25/32")		M10×1.50	150 (330 lbs)	25	100	600
TG-30	TG-30WT	TG-30GP-BL	40 (1-37/64")				M10×1.50	180 (396 lbs)	36	60	360

LEVELING GLIDE (PARTS SEPARABLE)

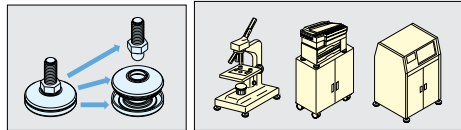


LOAD CAPACITY
50-270 kg
110-594 lbs

EA



- Bolt swivels to compensate for uneven floors.
- Parts can be easily separated for recycling purpose.



No.	Part Name	Material	Finish
①	Body	ABS	Dark Grey
②	Base		
③	Bolt	Steel	Chromate

Item No.	A	B	D	H	H ₁	H ₂
EA-25M6	8 (5/16")	9.2 (23/64")	25 (6-3/64")	31.0 (1-7/32")	8.5 (21/64")	14.0 (35/64")
EA-30M8	10 (25/64")	11.5 (29/64")	30 (1-3/16")	37.5 (1-15/32")	10.5 (13/32")	17.0 (43/64")
EA-40M10	13 (33/64")	15.0 (19/32")	40 (1-37/64")	42.5 (1-43/64")	13.0 (33/64")	20.5 (13/16")
EA-50M12	17 (43/64")	19.6 (49/64")	50 (1-31/32")	51.0 (2-1/64")	16.0 (5/8")	25.0 (63/64")

Item No.	L	θ°	d	Load Capacity (kg)	Weight (g)	Box (pcs)	Carton (pcs)
EA-25M6	17.0 (43/64")	10.0 (25/64")	M6 × 1.00	50 (110 lbs)	10	120	1200
EA-30M8	20.5 (13/16")	15.0 (19/32")	M8 × 1.25	100 (220 lbs)	20	80	800
EA-40M10	22.0 (55/64")	12.5 (31/64")	M10 × 1.50	130 (286 lbs)	32	40	400
EA-50M12	26.0 (1-1/32")	10.0 (25/64")	M12 × 1.75	270 (594 lbs)	60	20	200