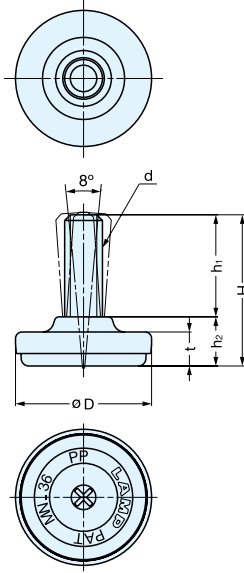


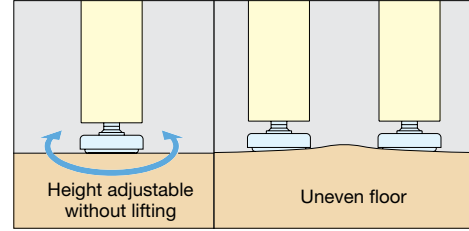
LEVELING GLIDE



MN



- Easy installation with phillips screw driver.
- Swivels approximately 8° to compensate for uneven floors.
- White polypropylene base to prevent floor damage.



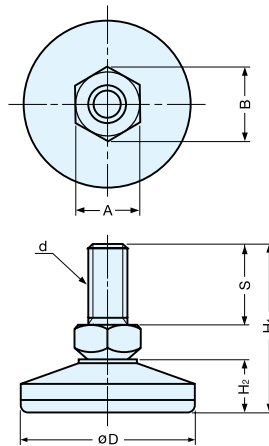
Part Name	Material	Finish
Cover	304 Stainless Steel	Satin
Bolt	Steel	Chrome
Base	Polypropylene	Natural

Item No.	D	H	h ₁	h ₂	t	d	Load Capacity (kg)	Weight (g)	Box (pcs)	Carton (pcs)
MN-25	25 (63/64")	40 (1-37/64")	27 (1-1/16")	13 (33/64")	9 (23/64")	W5/16-18	120 (264 lbs)	26	100	600
MN-32	32 (1-17/64")					160 (352 lbs)	34	80	480	
MN-36	36 (1-27/64")						39	60	360	
MN-40	40 (1-37/64")					42	50	300		
MN-50	50 (1-31/32")	50 (1-31/32")	34 (1-11/32")	16 (5/8")	11 (7/16")	W1/2-12	160 (352 lbs)	77	20	120

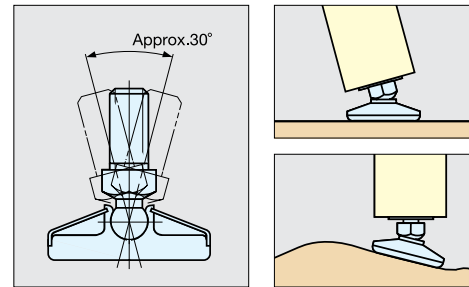
LEVELING GLIDE



RP



- Compensates for uneven floors.



Part Name	Material	Finish
Base Cover	304 Stainless Steel	Satin
Bolt	Steel	Clear Zinc Chromate
Base	Polyamide	Natural

Item No.	A	D	B	H ₁	S	H ₂	d	Load Capacity (kg)	Weight (g)	Box (pcs)	Carton (pcs)
RP-25M6	8 (5/16")	25 (63/64")	9.2 (2-3/64")	31.0 (1-7/32")	14 (35/64")	9.7 (3/8")	M6x1.0	60 (132 lbs)	11	50	500
RP-30M8	10 (25/64")	30 (1-3/16")	11.5 (29/64")	37.5 (1-15/32")	19 (3/4")	11.2 (7/16")	M8x1.25	110 (242 lbs)	21	35	350
RP-30N25							W5/16				
RP-40M10	13 (33/64")	40 (1-37/64")	15.0 (19/32")	42.5 (1-43/64")	20 (25/32")	13.7 (35/64")	M10x1.5	160 (352 lbs)	38	25	250
RP-40N3							W3/8				
RP-50M12	17 (43/64")	50 (1-31/32")	19.6 (49/64")	51.0 (2")	25 (63/64")	16.0 (5/8")	M12x1.75	320 (704 lbs)	70	15	
RP-70M14	19 (3/4")	70 (2-3/4")	22.0 (55/64")	66.5 (2-5/8")	30 (1-3/16")	24.7 (31/32")	M14x2.0	622 (1368 lbs)	150	10	100