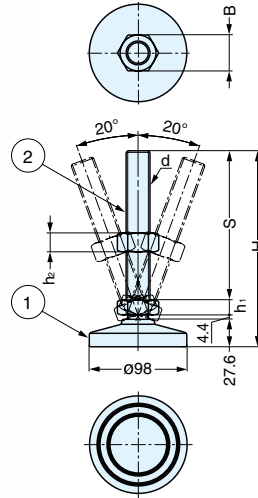


HEAVY DUTY LEVELING GLIDE (SWIVEL BOLT)



SDY-MAS



- Heavy duty leveling glide (4,400 lbs – 5,500 lbs).
- Anti-seize coating.
- Swivels approximately 40° to compensate for uneven floors.

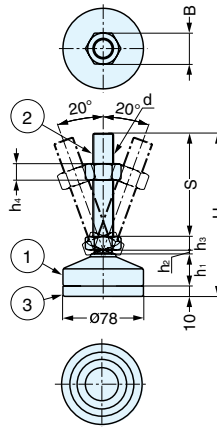
Part Name	Material	Finish
Base	304 Stainless Steel	Electropolished
Bolt		

Item No.	d	H	h ₁	h ₂	S	B	Weight (g)	Load Capacity (kg)
SDY-MAS-24-150	M24	197 (7-3/4")	15	19	150 (5-29/32")	36	1750	2000 (4400 lbs)
SDY-MAS-24-200		247 (9-23/32")	(19/32")	(3/4")	200 (7-7/8")	(1-27/64")	1910	
SDY-MAS-30-150	M30	202 (7-61/64")	20	24	150 (5-29/32")	46	2240	2500 (5500 lbs)
SDY-MAS-30-200		252 (9-59/64")	(25/32")	(15/16")	200 (7-7/8")	(1-13/16")	2540	

HEAVY DUTY LEVELING GLIDE (SWIVEL BOLT)



SDY-MASR



- Heavy duty leveling glide (3,300 lbs – 4,400 lbs).
- Anti-seize coating.
- Swivels approximately 40° to compensate for uneven floors.

Part Name	Material	Finish
Body	304 Stainless Steel	Electropolished
Bolt		
Base		Black Nitrile Ruber (NBR)

Item No.	d	H	h ₁	h ₂	h ₃	h ₄	S	B	Weight (g)	Load Capacity (kg)				
SDY-MASR-20-100	M20	158 (6-7/32")	31.0	4.0	13	16	100 (3-15/16")	30	980	1500 (3300 lbs)				
SDY-MASR-20-150		208 (8-3/16")					(1-7/32")		(5/32")		(33/64")	(5/8")	150 (5-29/32")	1080
SDY-MASR-20-200		258 (10-5/32")											200 (7-7/8")	1180
SDY-MASR-24-150	M24	219 (8-5/8")	39.6	4.4	15	19	150 (5-29/32")	36	1300	2000 (4400 lbs)				
SDY-MASR-24-200		269 (10-19/32")	(1-9/16")	(11/64")	(19/32")	(3/4")	200 (7-7/8")	(1-27/64")	1460					