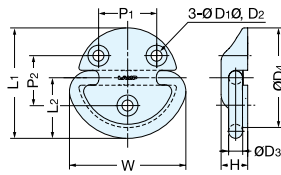


HEAVY DUTY FOLDING PAD EYE



EY-R



Item No.	Weight (g)	Box (pcs)	Carton (pcs)
EY-R50	116	10	120
EY-R60	202	10	60
EY-R80	431	5	30

- Loop has constant torque, ideal for vibration or shock applications.
- Suitable for marine, RV or freight applications.

Material	Finish
Body: 316 Stainless Steel/Loop: 304 Stainless Steel	Plain

Item No.	L ₁	L ₂	W	P ₁	P ₂	H	ØD ₁	ØD ₂	ØD ₃	ØD ₄	Load Capacity (kg)	Load Capacity (lbs)
EY-R50	54.0 (2-1/8")	30.0 (1-3/16")	56.5 (2-7/32")	28	24	14.5	5.5	10.4	7.5	48	500	1103
EY-R60	66.5 (2-5/8")	36.5 (1-7/16")	70.0 (2-3/4")	35	30	16.0	6.6	12.6	8.5	60	800	1764
EY-R80	88.5 (3-31/64")	48.5 (1-29/32")	94.0 (3-45/64")	45	40	19.0	9.0	17.3	11.0	80	1200	2646

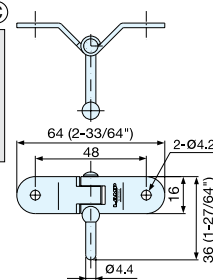
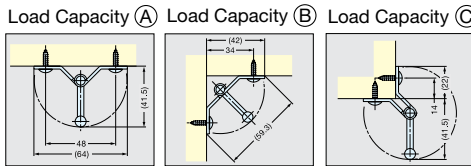
HOOKS

BUTTERFLY HOOKS / FOLDING PAD EYES

BUTTERFLY HOOK



TZ-360



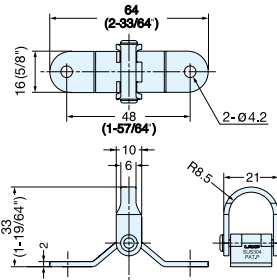
- Eyelet swivels for various installation applications.
- Hinged flap allows flush or corner mount.
- Applicable angle: 90° ~ 270°

Item No.	Load Capacity (A) (kg)	Load Capacity (B) (kg)	Load Capacity (C) (kg)	Weight (g)	Box (pcs)	Carton (pcs)	Material	Finish
TZ-360	6 (13 lbs)	5.6 (12 lbs)	3 (6 lbs)	27	50	500	304 Stainless Steel	Polished

BUTTERFLY HOOK



DZ-270

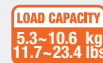


- Eyelet swivels for various installation applications.
- Hinged flap allows flush or corner mount.
- Applicable angle: 90° ~ 270°

Material	Finish
304 Stainless Steel	Polished

Item No.	Load Capacity (kg)	Weight (g)	Box (pcs)	Carton (pcs)
DZ-270	5.6 (12 lbs)	29	50	500

EYE HOOK

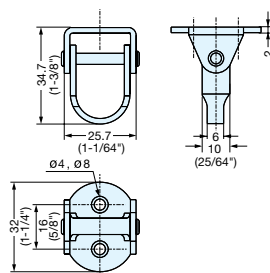


RF-D35



Horizontal

Vertical



- Eyelet swivels for various installation applications.
- Can be mounted horizontally to walls or under-mounted for vertical applications.
- Includes 5/8" (M3.5 x 16) long screws.

Item No.	Load Capacity (kg)	Weight (g)	Box (pcs)	Carton (pcs)	Material	Finish
RF-D35	5.3 (11 lbs) / 10.6 (23 lbs)	27	50	400	304 Stainless Steel	Satin