

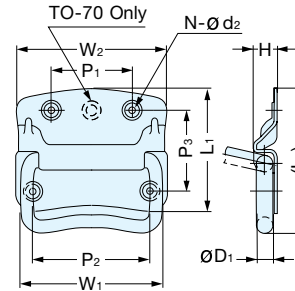
FOLDING RING PULL



TO



- Folding handle provides ample grabbing room under the handle for gloved hands.



Without Spring

Item No.		Material		Finish					
TO-70, TO-80, TO-90, TO-100		Without Spring		Steel		Yellow Zinc Chromate			
Item No.	L ₁	L ₂	W ₁	W ₂	H				
TO-70	54 (2-1/8")	69 (2-23/32")	60 (2-23/64")	68 (2-43/64")	9				
TO-80	73 (2-7/8")	80 (3-5/32")	75 (2-61/64")	83 (3-17/64")	11				
TO-90	75 (2-61/64")	91 (3-37/64")	82 (3-15/64")	90 (3-35/64")	12				
TO-100	85 (3-11/32")	105 (4-9/64")	95 (3-47/64")	102 (4-1/64")	14				
Item No.	P ₁	P ₂	P ₃	øD ₁	ød ₂	N	Weight (g)	Box (pcs)	Carton (pcs)
TO-70	-	49 (1-59/64")	34 (1-11/32")	6	4.7	3	60	10	460
TO-80	45 (1-49/64")	63 (2-31/64")	43 (1-11/16")	7	5.0	4	104		300
TO-90	48 (1-57/64")	69 (2-23/32")	47 (1-27/32")	8	5.5	4	135		240
TO-100	51 (2-1/64")	76 (2-63/64")	54 (2-1/8")	9	6.0	4	210		120

FOLDING RING PULL

3261, 3262 SERIES

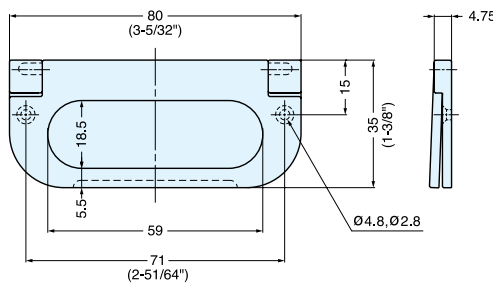


3261500/SN

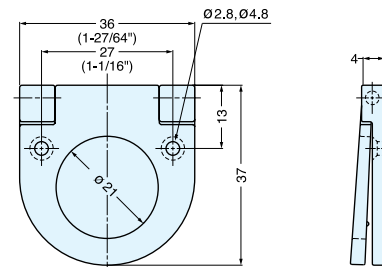


3262200/SN

- Surface mounted.
- Low profile design



3261500/SN



3262200/SN

Item No.	Weight (g)	Box (pcs)	Carton (pcs)	Material	Finish
3261500/SN	49.3	25	250	Zinc Alloy	Satin Nickel
3262200/SN	26.0		600		