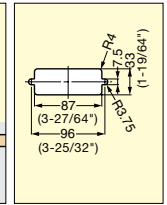
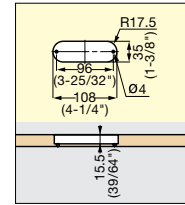
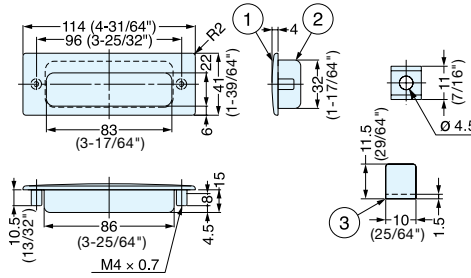


RECESSED PULL



HH-KS

• Ideal for harsh and high corrosive environments.



Item No.	Finish	Weight (g)	Box (pcs)	Carton (pcs)
HH-KS 114M	Mirror	110	10	60
HH-KS 114S	Satin			

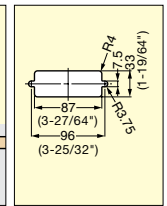
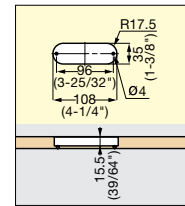
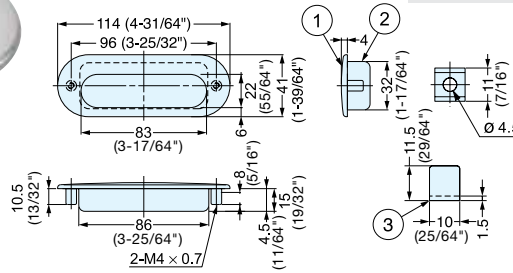
No.	Part Name	Material	Finish
①	Face Plate	316 Stainless Steel	Mirror/Satin
②	Case	304 Stainless Steel	Satin
③	Spacer		-

RECESSED PULL



HH-DS

• Ideal for harsh and high corrosive environments.



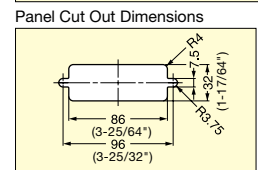
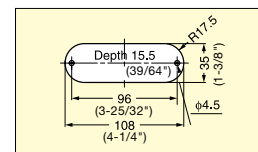
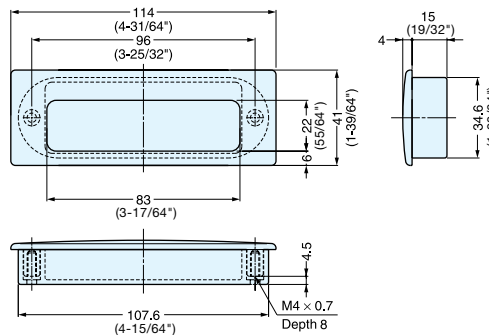
Item No.	Finish	Weight (g)	Box (pcs)	Carton (pcs)
HH-DS 114M	Mirror	105	10	60
HH-DS 114S	Satin			

No.	Part Name	Material	Finish
①	Face Plate	316 Stainless Steel	Mirror/Satin
②	Case	304 Stainless Steel	Satin
③	Spacer		-

RECESSED PULL



HH-K



Sheetmetal Cut Out Dimensions. Put sheet metal between front and back part for sheet metal applications. (Max. sheet metal thickness: 2 mm)

Item No.	Weight (g)	Box (pcs)	Carton (pcs)
HH-K	90	10	60

Material	Finish/Color
316 Stainless Steel	Mirror
ABS	Black