

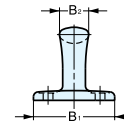
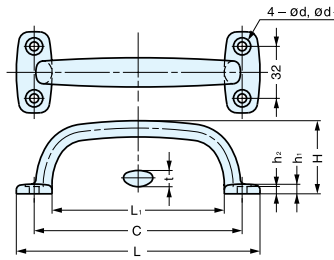
HANDLE



4LC



• Ideal for harsh and highly corrosive environments.



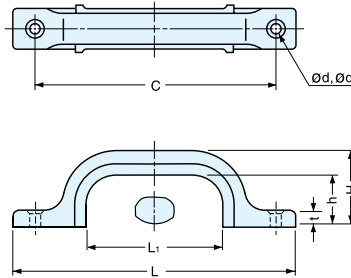
Material	Finish
316 Stainless Steel	Mirror

Item No.	L	L1	C	B1	B2	H	h1	h2	t	d	d1	Weight (g)	Box (pcs)	Carton (pcs)	Screw
4LC-82	82 (3-15/64")	46	64 (2-33/64")	48	16	36.5 (1-7/16")	5.5	4.0	8	5	9.5	110	8	96	4 x 20
4LC-114	114 (4-31/64")	78	96 (3-25/32")			40.0 (1-37/64")	6.0	4.5	9			148	6	72	
4LC-150	150 (5-29/32")	106	128 (5-1/32")	50	18	45.0 (1-49/64")			10	6	11.0	210	3	36	5 x 32
4LC-180	180 (7-3/32")	140	160 (6-19/64")		20	48.0 (1-57/64")	6.5	5.0				270	2	24	

HANDLE



US



• Rubber grip allows for an easy and comfortable grip.
• Light weight design.

* Grip - Black/Synthetic Rubber

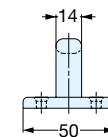
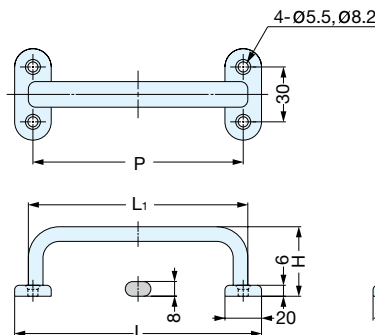
Material	Finish
304 Stainless Steel	Mirror (M)/Satin (S)

Item No.	L	L1	C	B	H	h	t	d	d1	Weight (g)	Box (pcs)	Carton (pcs)	Screw	
US-70/M	US-70/S	70 (2-3/4")	20	54 (2-1/8")	17	28.0 (1-7/64")	21	5.5	3.3	6.6	20	20	200	3.1x16
US-120/M	US-120/S	120 (4-23/32")	57	102 (4-1/64")	19	32.0 (1-17/64")		6.5	3.8	7.6	45		3.5x20	
US-160/M	US-160/S	160 (6-19/64")	88	140 (5-33/64")	22	37.5 (1-15/32")	23	7.5	4.1	8.1	70	10	100	4.1x25

HANDLE



EC-H



Material	Finish
303 Stainless Steel	Mirror

Item No.	L	L1	C	H	Weight (g)	Box (pcs)	Carton (pcs)	Screw
EC-H-135	135 (5-5/16")	120 (4-23/32")	115 (4-17/32")	40 (1-37/64")	191	5	50	3.1x16
EC-H-165	165 (6-1/2")	150 (5-29/32")	145 (5-45/64")	42 (1-21/32")	216	3	30	3.5x20