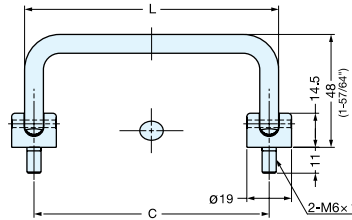


# FOLDING HANDLE (STUD TYPE)



HK



- 90-degree folding handle.
- Handle clicks into open and closed position.

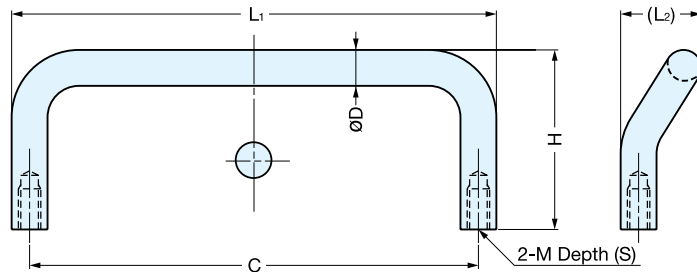
Item No.	C	L	Load Capacity (kg)	Weight (g)	Box (pcs)	Carton (pcs)
HK-80	80 (3-5/32")	88 (3-15/32")	50 (110 lbs)	125	10	100
HK-100	100 (3-15/16")	108 (4-1/4")		136		
HK-120	120 (4-23/32")	128 (5-3/64")		146		

Material	Finish
304 Stainless Steel	Mirror

# HANDLE (OFFSET)



H-75-C



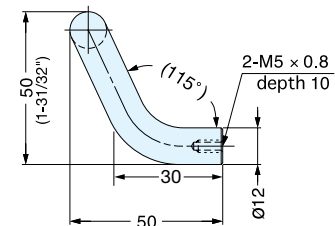
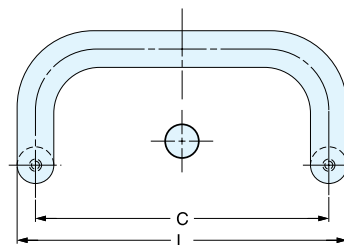
Material	Finish
304 Stainless Steel	Polished

Item No.	L <sub>1</sub>	(L <sub>2</sub> )	(S)	H	C	øD	M	Weight (g)	Box (pcs)	Carton (pcs)
H-75-C-66	66 (2-19/32")	16	7	30.0 (1-3/16")	60 (2-23/64")	6	M4	23	100	400
H-75-C-86	86 (3-25/64")			31.5 (1-15/64")	80 (3-5/32")			28		
H-75-C-108	108 (4-1/4")	18	10	32.0 (1-17/64")	100 (3-15/16")	8	M5	54	50	200
H-75-C-128	128 (5-3/64")			40.0 (1-37/64")	120 (4-23/32")			70		

# HANDLE (OFFSET)



LF-12



Item No.	L	C	Weight (g)	Box (pcs)	Carton (pcs)
LF-12-96	108 (4-1/4")	96 (3-25/32")	182	10	80
LF-12-128	140 (5-33/64")	128 (5-3/64")	211		60
LF-12-160	172 (6-49/64")	160 (6-19/64")	236		

Material	Finish
304 Stainless Steel	Satin