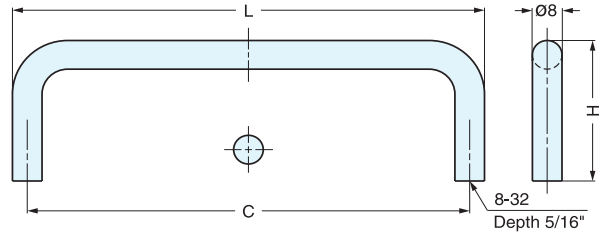


WIRE PULL



SWP

- Ideal for harsh and highly corrosive environments.



Item No.	L	C	H	Weight (g)	Box (pcs)	Carton (pcs)
SWP-630/S	84.2 (3-5/16")	76.2 (3")	34 (1-11/32")	71	20	200
SWP-635/S	96.9 (3-13/16")	88.9 (3-1/2")		78		
SWP-640/S	109.6 (4-5/16")	101.6 (4")		85		
SWP-696/S	104.0 (4-3/32")	96.0 (3-25/32")		91		

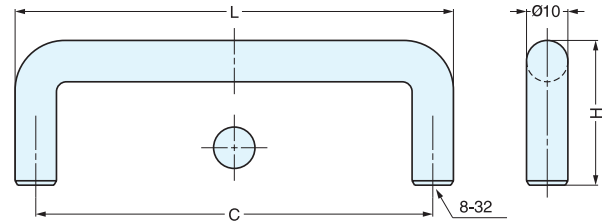
Material	Finish
316 Stainless Steel	Satin

WIRE PULL



SWF

- Ideal for harsh and highly corrosive environments.



Item No.	L	C	H	Weight (g)	Box (pcs)	Carton (pcs)
SWF-640	111.0 (4-3/8")	101.5 (4")	35 (1-3/8")	90	20	160
SWF-650	136.5 (5-3/8")	127.0 (5")		110		160
SWF-660	162.0 (6-3/8")	152.5 (6")		130		120
SWF-690	238.0 (9-3/8")	228.5 (9")		200		120
SWF-6120	314.5 (12-3/8")	305.0 (12")		270		80

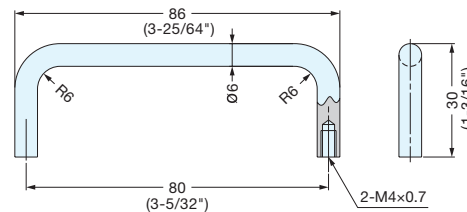
Material	Finish
316 Stainless Steel	Satin

WIRE PULL



H-42-F14

- Ideal for harsh and highly corrosive environments.



Item No.	Weight (g)	Box (pcs)	Carton (pcs)
H-42-F14	25	50	250

Material	Finish
316 Stainless Steel	Mirror