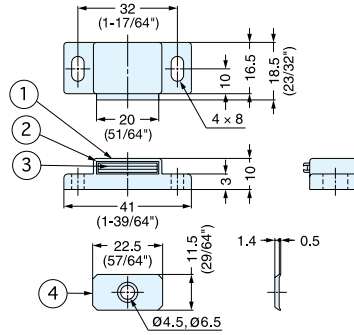
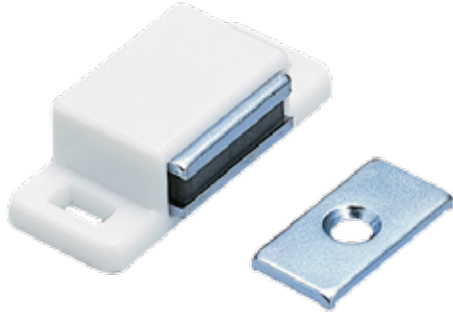


MAGNETIC CATCH



MC0097



No.	Part Name	Material	Finish/Color
①	Housing	Polyethylene	Black/White
②	Yoke	Steel	Chromate
③	Magnet	Ferrite	-
④	Counterplate	Steel	Chromate

Item No.		Magnetic Force (kg)	Weight (g)	Box (pcs)	Carton (pcs)
White	Black				
MC0097/WHT	MC0097/BLK	1.5 (3.3 lbs)	12	100	1000
MC0097/WHT-1	MC0097/BLK-1	3.5 (7.7 lbs)			

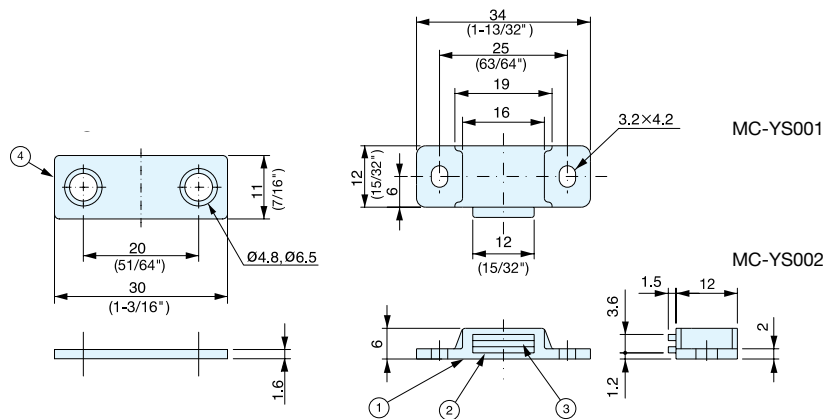
MINI MAGNETIC CATCH



MC-YS



- Mini magnetic catch is ideal for tight spaces.
- Strong or light magnetic force available.



No.	Part Name	Material	Finish/Color	No.	Part Name	Material	Finish/Color
①	Housing	PBT	White	①	Housing	PBT	White
②	Yoke	Steel	Yellow Zinc Chromate	②	Yoke	Steel	Chromate
③	Magnet	Neodymium	Nickel	③	Magnet	Ferrite	-
④	Counterplate	Steel	Yellow Zinc Chromate	④	Counterplate	Steel	Yellow Zinc Chromate

Item No.	Magnet	Magnetic Force (kg)	Weight (g)	Box (pcs)	Carton (pcs)
MC-YS001	Neodymium	3.0 (6.6 lbs)	6	100	1000
MC-YS002	Ferrite	1.2 (2.6 lbs)	5		