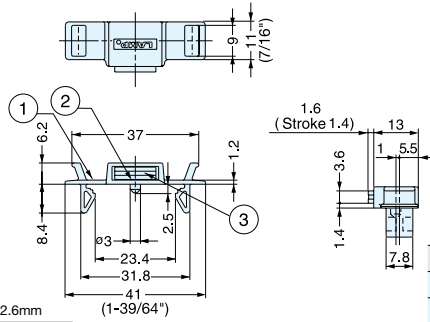


MAGNETIC CATCH (SNAP-IN TYPE)

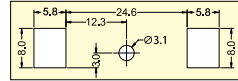
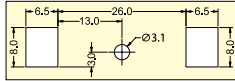
MC-YSW



- Snap-in magnetic catch for sheet metal applications.
- Small size allows for tight spaces.
- Flex tab allows for easy removal.

For sheet metal thickness 1.6mm

For sheet metal thickness 2.6mm



Item No.	Magnetic Force (kg)	Weight (g)	Box (pcs)	Carton (pcs)
MC-YSW01W MC-YSW01B	1.2 (2.6 lbs)	5.0	100	1000
MC-YSW02W MC-YSW02B	3.0 (6.6 lbs)	5.5		

MC-YSW01

No.	Part Name	Material	Finish/Color
①	Housing	Polyacetal	White (W)/Black (B)
②	Yoke	Steel	Chromate
③	Magnet	Ferrite	-

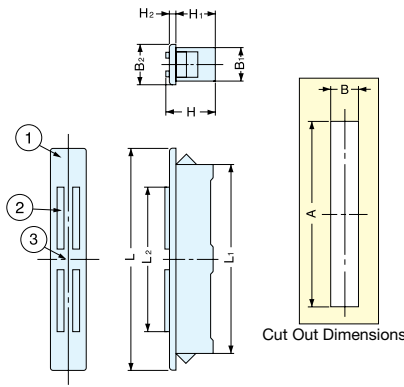
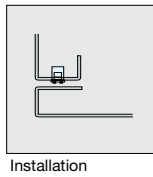
MC-YSW02

No.	Part Name	Material	Finish/Color
①	Housing	Polyacetal	White (W)/Black (B)
②	Yoke	Steel	Yellow Zinc Chromate
③	Magnet	Neodymium	Nickel

MAGNETIC CATCH (SNAP-IN TYPE)



MC-FS5, MC-FS10



- Snap-in magnetic catch for sheet metal applications.

Panel Thickness	Cut Out Dimensions			
	MC-FS5		MC-FS10	
	A	B	A	B
0.8	34.1 (1-11/32")	8.2 (21/64")	55.0 (2-5/32")	8.2 (21/64")
1.0	34.5 (1-23/64")		55.5 (2-3/16")	
1.2	34.5 (1-23/64")	8.2 (21/64")	56.0 (2-13/64")	8.2 (21/64")
1.6	35.0 (1-3/8")		56.5 (2-7/32")	
2.0	36.5 (1-7/16")		56.5 (2-7/32")	

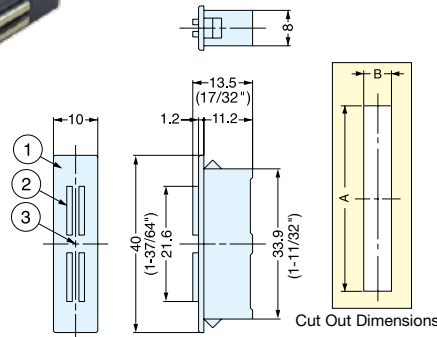
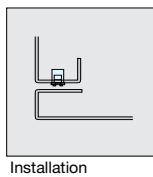
No.	Part Name	Material	Finish/Color
①	Housing	ABS	White (W)/Black (B)
②	Yoke	Steel	Yellow Zinc Chromate
③	Magnet	Ferrite	-

Item No.	L	L ₁	L ₂	B ₁	B ₂	H	H ₁	H ₂	Magnetic Force (kg)	Weight (g)	Box (pcs)	Carton (pcs)
MC-FS5W MC-FS5B	40	33.9 (1-11/32")	21.6	8	10	13.5 (17/32")	11.2	1.2	2.2 (4.8 lbs)	9.0	200	2000
MC-FS10W MC-FS10B	64	54.5 (2-9/64")	43.0	8	10	14.0 (35/64")	11.5	1.5	4.5 (9.9 lbs)	17.1	50	1000

MAGNETIC CATCH (SNAP-IN TYPE)



MC-FP



- Snap-in magnetic catch for sheet metal applications.
- Small design with a strong magnetic force.

Panel Thickness	Cut Out Dimensions	
	A	B
0.8	34.1 (1-11/32")	8.2 (21/64")
1.0		
1.2	34.5 (1-23/64")	
1.6	35.0 (1-3/8")	
2.0	36.5 (1-7/16")	

No.	Part Name	Material	Finish/Color
①	Housing	ABS	White (WT)/Black (BL)
②	Yoke	Steel	Yellow Zinc Chromate
③	Magnet	Neodymium	-

Item No.	Magnetic Force (kg)	Weight (g)	Box (pcs)	Carton (pcs)
MC-FP5SWT MC-FP5SBL	4.5 (9.9 lbs)	9	200	2000