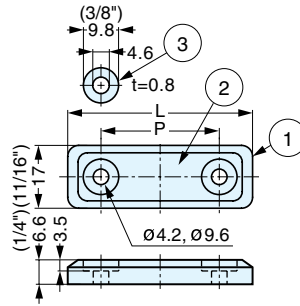


SEALED MAGNETIC CATCH



MC-MSH



- Sealed with silicon rubber to reduce noise when door closes.
- Strong magnetic force.
- Optional counterplate sold separately
 - Stainless Steel - MCJM49, AS-68
 - Plastic Sealed - MC-JMP45
- Screws not included: M4 truss screw recommended.

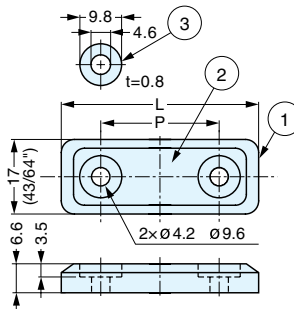
No.	Part Name	Material	Finish/Color
①	Body	Silicone Rubber	Blue
②	Magnet	Neodymium	Nickel
③	Washer	304 Stainless Steel	Plain

Item No.	L	P	Magnetic Force (kg)	Weight (g)	Box (pcs)	Carton (pcs)
MC-MSH45BU	45 (1-49/64")	27 (1-1/16")	2.0 (4.4 lbs)	12	100	1000
MC-MSH50BU	50 (1-31/32")	32 (1-17/64")	4.0 (8.8 lbs)	15		

SEALED MAGNETIC CATCH



MC-MS45/50



- Sealed with silicon rubber to reduce noise when door closes.
- Strong magnetic force.
- Optional counterplate sold separately
 - Stainless Steel - MCJM49, AS-68
 - Plastic Sealed - MC-JMP45
- Screws not included: M4 truss screw recommended.

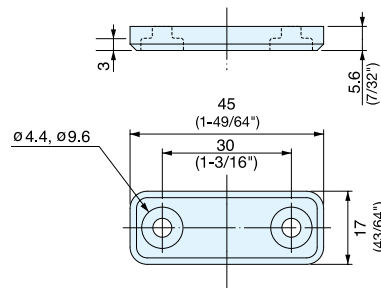
No.	Part Name	Material	Finish/Color
①	Body	Silicone Rubber	Light Gray/Dark Gray
②	Magnet	Neodymium	Nickel
③	Washer	304 Stainless Steel	Plain

Item No.	Body Color	L	P	Magnetic Force (kg)	Weight (g)	Box (pcs)	Carton (pcs)
MC-MS45LGR	Light Gray	45 (1-49/64")	27 (1-1/16")	2.0 (4.4 lbs)	12	100	1000
MC-MS45DGR	Dark Gray			2.0 (4.4 lbs)			
MC-MS50LGR	Light Gray	70 (2-49/64")	32 (1-17/64")	4.0 (8.8 lbs)	15	100	1000
MC-MS50DGR	Dark Gray						

SEALED COUNTERPLATE



MC-JMP45



- Hermetically sealed strike eliminates metal particles when applied with MC-JM sealed magnetic catches.
- Same design as MC-JM45WT, MC-JM45BL - Blue marking on the back side to distinguish strike plate from magnet.
- Note: Only MC-JMPWT is NSF certified

Item No.	Weight (g)	Box (pcs)	Carton (pcs)	Part Name	Material	Finish/Color
MC-JMP45WT	8.5	100	1000	Body	Polypropylene	White (WT)/Black (BL)
MC-JMP45BL				Plate	Steel	Plain