

HEAVY DUTY LID STAY



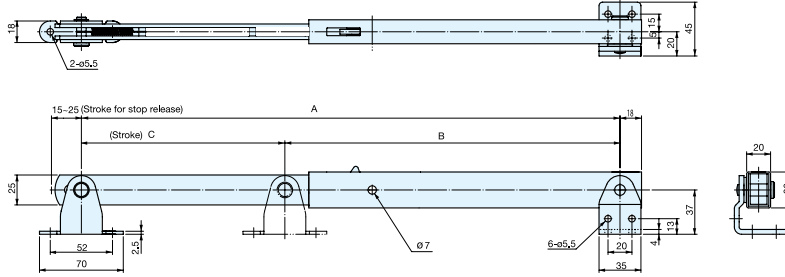
LB-S



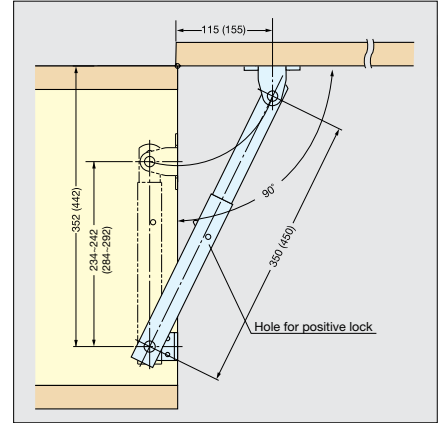
LB-S350



LB-S450



- Heavy duty lid stay holds lid or panel in fully opened position.
- Lift up the lid to release.
- Can be installed individually or in pairs.
- Non-Handed: Can be installed on left or right side.



Measurements above in () are for LB-S450.
*Lid stay must be installed parallel to the sidewall.

Material	Finish
304 Stainless Steel	Satin

Item No.	(A)	B	C	Load Capacity (kg)	Weight (g)	Box (pcs)	Carton (pcs)
LB-S350	350 (13-25/32")	230 (9-1/16")	120 (4-23/32")	133 (293 lbs)	715	5	20
LB-S450	450 (17-25/32")	280 (11-1/32")	170 (6-11/16")	97 (214 lbs)	820		

HEAVY DUTY MULTI-ANGLE LID STAY



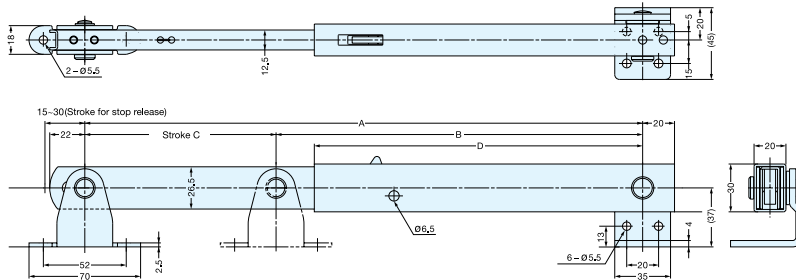
LBTS



LBTS-350

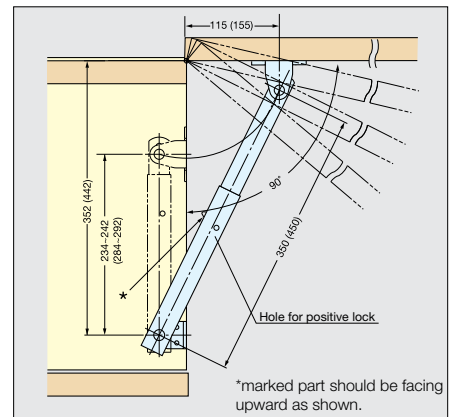


LBTS-450



Above drawing shows LBTS right-hand mounting.

- Ratchet stay holds lid at multiple angles.
- Fully lift up lid to release.
- Can be installed individually or in pairs.



Measurements above in () are for LB-S450.
*Lid stay must be installed parallel to the sidewall.

Material	Finish
304 Stainless Steel	Satin

Item No.		(A)	B	C	D	Stop Positions	Load Capacity (kg)	Weight (g)	Box (pcs)	Carton (pcs)
Left	Right									
LBTS-350L	LBTS-350R	350 (13-25/32")	230 (9-1/16")	120 (4-23/32")	206 (8-7/64")	4	70 (154 lbs)	715	5	20
LBTS-450L	LBTS-450R	450 (17-25/32")	280 (11-1/32")	170 (6-11/16")	256 (10-5/64")	6		820		