

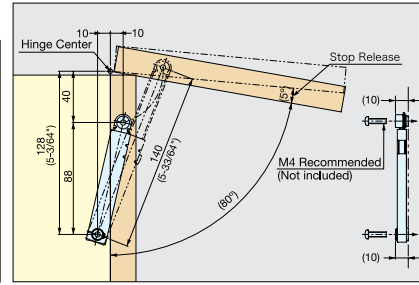
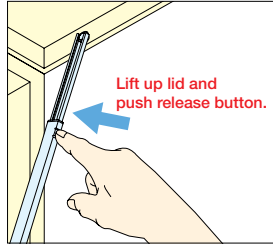
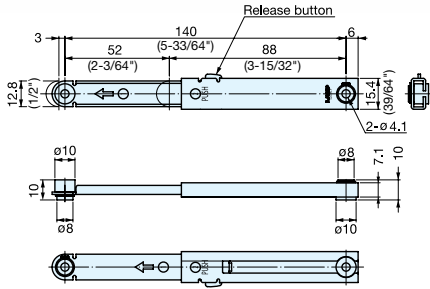
MINI LID STAY (W/LOCK)



L-SL140



- Automatically locks lid/panel when fully opened.
- Push button to release.
- Can be installed individually or in pairs.
- Non-Handed: Can be installed on left or right side.
- Mounting brackets (L-SL140-BT) sold separately.



*Lid stay must be installed parallel to the sidewall.

Item No.	Load Capacity (kg)	Weight (g)	Box (pcs)	Carton (pcs)	Material	Finish
L-SL140	15 (33 lbs)/each	40	30	300	304 Stainless Steel	Polished

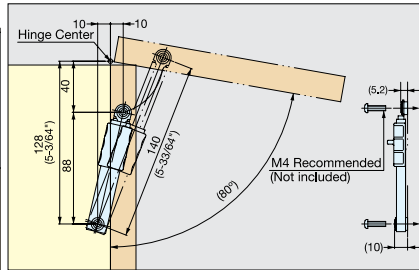
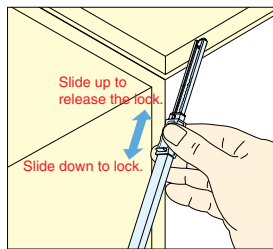
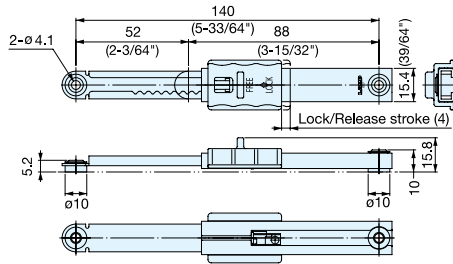
MINI LID STAY (W/LOCK)



L-FS140



- Locks lid/panel in multiple positions by manually sliding lock lever.
- Slide lever to lock/unlock.
- Can be installed individually or in pairs.
- Non-Handed: Can be installed on left or right side.
- Mounting brackets (L-FS140-BT) sold separately.



*Lid stay must be installed parallel to the sidewall.

Item No.	Load Capacity (kg)	Weight (g)	Box (pcs)	Carton (pcs)	Material	Finish/Color
L-FS140	6 (13.2 lbs)/each	50	20	200	304 Stainless Steel Polyacetal	Polished Dark Grey

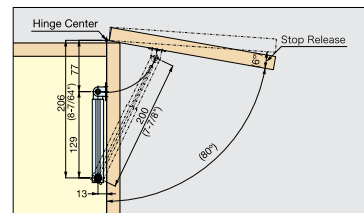
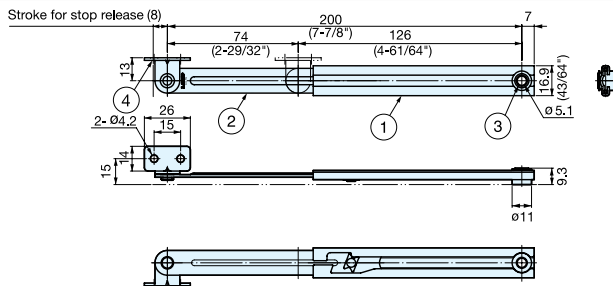
LOW PROFILE LID STAY



L-200P



- Holds lid or panel in fully opened position.
- Lift up the lid to release.
- Can be installed individually or in pairs.
- Non-Handed: Can be installed on left or right side.
- Mounting brackets (L-200-BT) sold separately.



*Lid stay must be installed parallel to the sidewall.

Item No.	Load Capacity (kg)	Weight (g)	Box (pcs)	Carton (pcs)
L-200P	15 (33 lbs)/each	65	30	300

No.	Part Name	Material	Finish
①	Housing	304 Stainless Steel	Polished
②	Arm		
③	Hosing Bracket	303 Stainless Steel	Plain
④	Arm Bracket	304 Stainless Steel	Polished