

# ADJUSTABLE SOFT-DOWN STAY



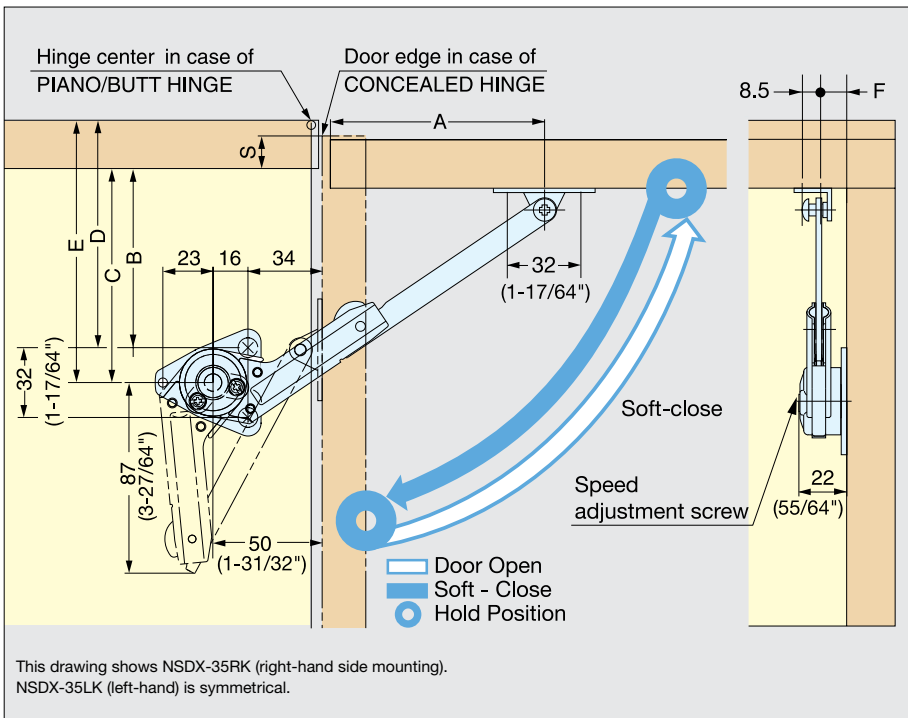
# NSDX-35

LID SUPPORTS

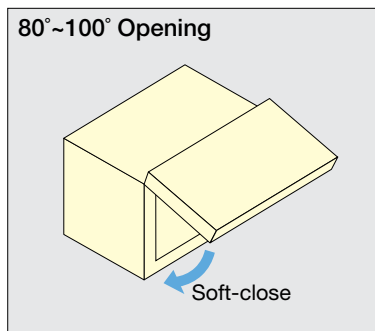
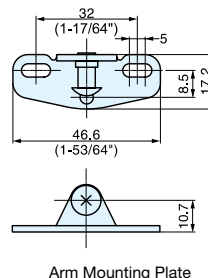
ADJUSTABLE SOFT-DOWN STAYS



- For UPWARD-OPENING FLAP DOOR with piano, concealed butt or drop hinges.
- Opening angle 80°, 90° or 100°.
- NSDX-35 is designed to hold door in fully opened position.
- Speed adjustment screw located on front for easy adjustment.
- Handed: Specific left and right hand mounting.
- Torque Calculation:
  - Torque = Door Height x 1/2 x Door Weight
  - Per Piece : 20~70 kg·cm (19~60 lbs·inch)
  - Per Pair : 40~140 kg·cm (38~120 lbs·inch)



NSDX-SZ  
 <Standard>  
 Mounting Plate for wooden door, Screw type



Note: "S" dimension is the overlay coverage for concealed hinge(s).

| Opening Angle | Hinge Type       | A                | B                 | C                  | D               | E                | F  |
|---------------|------------------|------------------|-------------------|--------------------|-----------------|------------------|----|
| 80°           | Concealed Hinge  | 106.0 (4-11/64") | 105.0 (4-9/64")-S | 121.0 (4-49/64")-S | -               | -                | 12 |
|               | Piano/Butt Hinge | 100.0 (3-15/16") | -                 | -                  | 99.0 (3-57/64") | 115.0 (4-17/32") |    |
| 90°           | Concealed Hinge  | 98.0 (3-35/64")  | 97.0 (3-13/16")-S | 113.0 (4-29/64")-S | -               | -                |    |
|               | Piano/Butt Hinge | 91.5 (3-39/64")  | -                 | -                  | 90.5 (3-9/16")  | 106.5 (4-3/16")  |    |
| 100°          | Concealed Hinge  | 92.5 (3-41/64")  | 91.5 (3-39/64")-S | 107.5 (4-15/64")-S | -               | -                |    |
|               | Piano/Butt Hinge | 85.0 (3-11/32")  | -                 | -                  | 84.0 (3-5/16")  | 100.0 (3-15/16") |    |

| Item No.  | Weight (g) | Box (pcs) | Carton (pcs) | Material   | Finish |
|-----------|------------|-----------|--------------|------------|--------|
| NSDX-35RK | 181        | 20        | 80           | Zinc Alloy | Nickel |
| NSDX-35LK |            |           |              | Steel      |        |