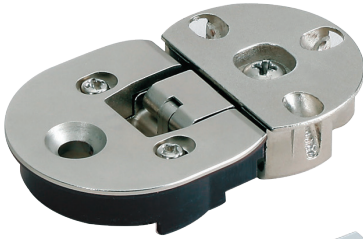
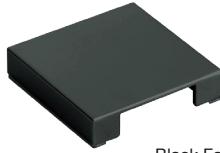
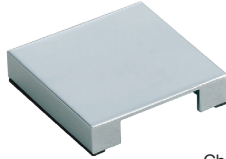
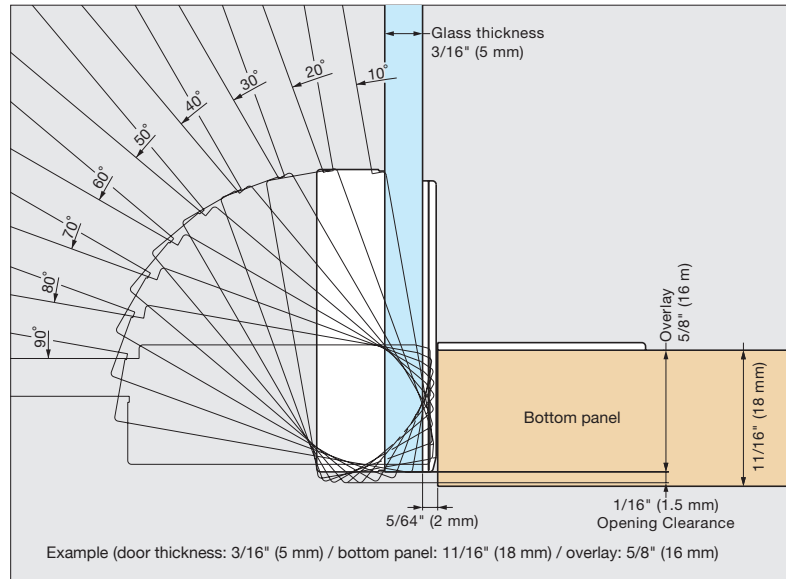
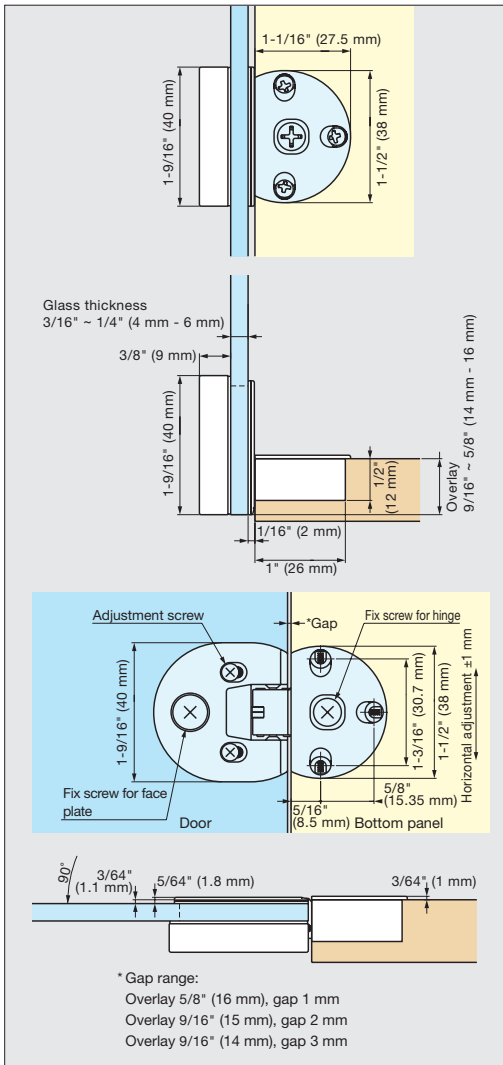
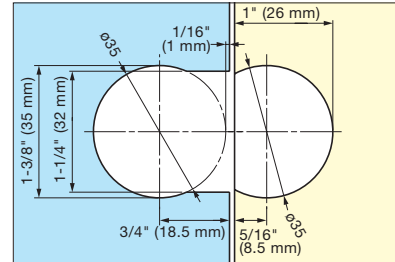


**DROP HINGE (FOR GLASS DOOR)**


SDH-G


 Black Face Plate  
SDH-FP/BL (Sold Separately)

 Chrome Face Plate  
SDH-FP/CR (Sold Separately)

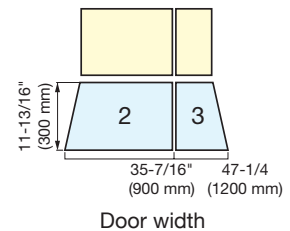
- 90° opening angle creates 180° surface.
- 3-way adjustment:  
 Door gap : 5/64" ~ 1/8" (2 mm - 3 mm)  
 Horizontal : ± 3/64" (1 mm)  
 Overlay : 35/64" ~ 5/8" (14 mm - 16 mm)
- Can be used with soft-down stay SDS-100 or NSDX-10.

**Cut Out Dimensions**

**Application Example**


Combination with SDS-100-TV lid support.

**Quantity of Hinges**

In case glass thickness is from 3/16" ~ 1/4" (4 mm to 6 mm).



Item No.	Material	Finish	Overlay	Glass Thickness	Opening Angle	Weight (g)	Box (pcs)
SDH-G	Zinc Alloy (ZDC)	Nickel	9/16" ~ 5/8" (14 mm - 16 mm)	3/16" ~ 1/4" (4 mm - 6 mm)	90°	91	50
Item No.	Material	Finish	Weight (g)	Box (pcs)			
SDH-FP/CR	Zinc Alloy (ZDC)	Chrome	43	50			
SDH-FP/BL		Black					

Face Plate (Sold Separately)