

SPLIT CABLE GROMMET



CHC-S



CHC-S18DN



CHC-S18GC



CHC-S22DB



CHC-S26BL

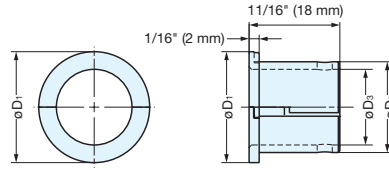
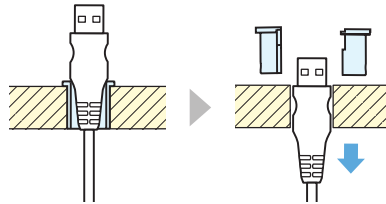
- Opening that can easily be split apart to accept larger plugs or connectors.
- The CHC series provides grommet openings that securely fit your cable size needs.
- High-end metal solution (zinc die casting) for greater durability than plastic grommets.
- CHC-S22 and CHC-S26 come with a guide that helps keep the parts aligned when being reassembled.
- Larger split cable grommet LS-50S-S is also available.

Cable Diameter

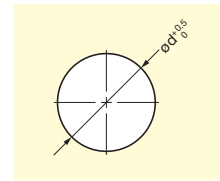
- CHC-S18: 1/2"~9/16" (12~14 mm) (LAN cable and RJ45 connector)
- CHC-S22: 9/16"~11/16" (15~18 mm) (USB cable)
- CHC-S26: 11/16"~7/8" (18~22 mm) (HDMI cable)

*Please check with actual cables before use.

Split System Easy to replace cables.



Cut Out Dimension



Item No.	Material	Finish	D ₁	D ₂	D ₃	d	Weight (g)	Box (pcs)	Carton (pcs)
CHC-S18DN	Zinc Alloy (ZDC)	Nickel	11/16" (18 mm)	9/16" (14 mm)	1/2" (12 mm)	9/16" (14 mm)	6	100	400
CHC-S18GC		Gold Plating							
CHC-S18DB		Antique Brass							
CHC-S18BL		Black							
CHC-S22DN		Nickel	7/8" (22 mm)	11/16" (18 mm)	9/16" (15 mm)	11/16" (18 mm)	10		
CHC-S22GC		Gold Plating							
CHC-S22DB		Antique Brass							
CHC-S22BL		Black							
CHC-S26DN		Nickel	1" (26 mm)	7/8" (22 mm)	11/16" (18 mm)	7/8" (22 mm)	16		
CHC-S26GC		Gold Plating							
CHC-S26DB		Antique Brass							
CHC-S26BL		Black							