

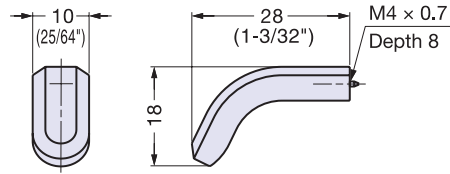
## Zwei L Knob



## ZL-1904



- Anti-rotation pin is removable.
- Includes 1" long stainless steel screw (M4 × 25).



Item No.	Material	Finish/Color	Weight (g)	Box (pcs)
ZL-1904	316 Stainless Steel	Zwei L	12	8

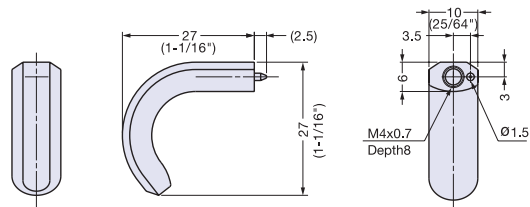
## Zwei L Knob



## ZL-1905



- Anti-rotation pin is removable.
- Includes 1" long stainless steel screw (M4 × 25).



Item No.	Material	Finish/Color	Weight (g)	Box (pcs)
ZL-1905	316 Stainless Steel	Zwei L	15	8

## Zwei L Knob Base



## ZL-2302



Plate/Screw Set for Knob (ø16)

Item No.	Part Name	Material	Finish/Color	Box (Set)
ZL-2302-1916	Screw (M4 × 16)	Stainless Steel	Zwei L	1
	Base Plate (16)	316 Stainless Steel	Zwei L	
	Gasket (14)	Elastomer	Plain	

Plate/Screw Set for Knob (ø25) \*2 gaskets included.

Item No.	Part Name	Material	Finish/Color	Box (Set)
ZL-2302-1925	Screw (M4 × 16)	Stainless Steel	Zwei L	1
	Base Plate (ø16)	316 Stainless Steel	Zwei L	
	Gasket (ø14)	Elastomer	Plain	
	Gasket (ø20)	Elastomer	Plain	

