

EDGE PULL



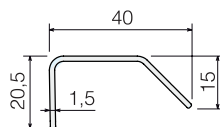
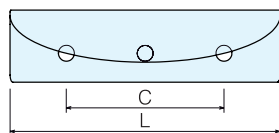
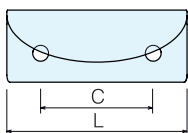
DSI-360



- Back mounted cabinet pull.
- Rounded front pull, available in various lengths.

For Models:
16,64,96,128

For Models:
160, 192



Item No.	L	C	Weight (g)	Box (pcs)	Carton (pcs)
DSI-360-16	1-1/4" (32)	5/8" (16)	24	25	200
DSI-360-64	3-3/4" (96)	2-1/2" (64)	68		150
DSI-360-96	5-1/16" (128)	3-3/4" (96)	90		100
DSI-360-128	6-5/16" (160)	5-1/16" (128)	120	10	60
DSI-360-160	7-9/16" (192)	6-5/16" (160)	144	10	40
DSI-360-192	8-13/16" (224)	7-9/16" (192)	156		

Material	Finish
304 Stainless Steel	Satin

EDGE PULL



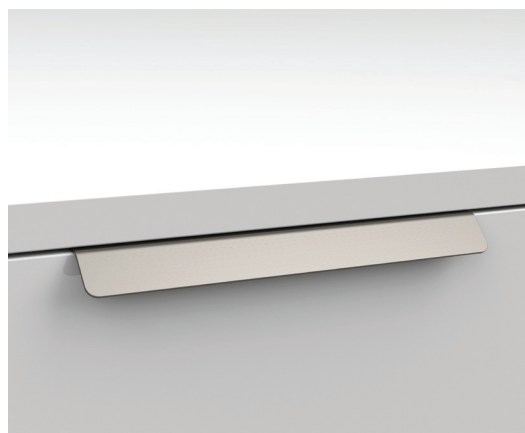
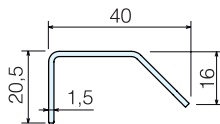
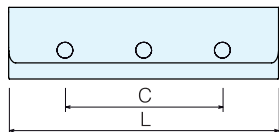
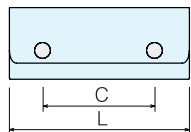
DSI-370



- Back mounted cabinet pull.
- Rectangle front pull, available in various lengths.

For Models:
16,64,96,128

For Models:
160, 192



Item No.	L	C	Weight (g)	Box (pcs)	Carton (pcs)
DSI-370-16	1-1/4" (32)	5/8" (16)	24	25	200
DSI-370-64	3-3/4" (96)	2-1/2" (64)	68		150
DSI-370-96	5-1/16" (128)	3-3/4" (96)	90		100
DSI-370-128	6-5/16" (160)	5-1/16" (128)	120	10	60
DSI-370-160	7-9/16" (192)	6-5/16" (160)	144	10	40
DSI-370-192	8-13/16" (224)	7-9/16" (192)	156		

Material	Finish
304 Stainless Steel	Satin