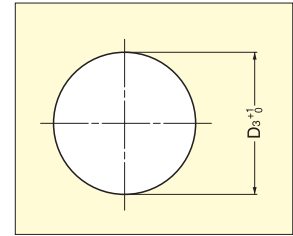
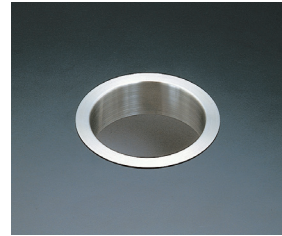
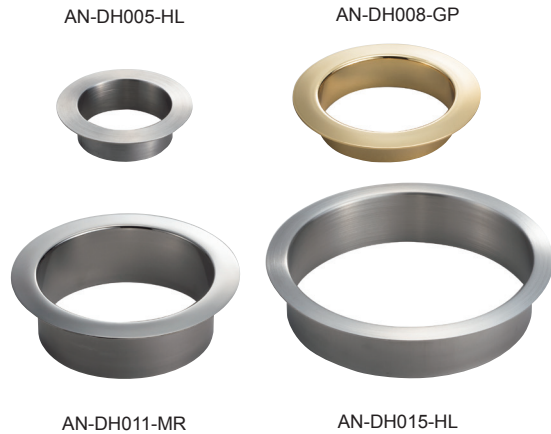


MULTI-PURPOSE GROMMET

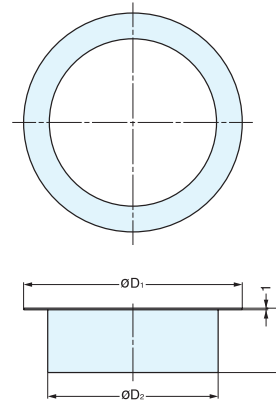
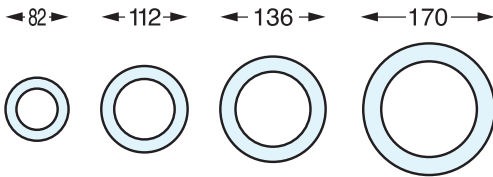


AN-DH, AN-LH

- Corrosion resistant.
- Wide range of sizes and finishes.



Cut Out Dimensions



MISCELLANEOUS

MULTI-PURPOSE GROMMET

Item No.	Old Item No.	A	D ₁	D ₂	D ₃	Material	Finish	Weight (g)
AN-DH005-GP	-	36	82 (3-15/64")	58 (2-9/32")	59 (2-21/64")	Stainless Steel (SUS 304)	Gold	66
AN-DH005-MR	-						Mirror	
AN-DH005-HL	-						Satin	
AN-DH008-GP	AN-DH001-GP	40	112 (4-13/32")	82 (3-15/64")	83 (3-17/64")		Gold	107
AN-DH008-MR	AN-DH001-MR						Mirror	
AN-DH008-HL	AN-DH001-HL						Satin	
AN-DH011-GP	-	40	136 (5-23/64")	106 (4-11/64")	107 (4-7/32")		Gold	137
AN-DH011-MR	-						Mirror	
AN-DH011-HL	-						Satin	
AN-DH015-GP	-	36	170 (6-11/16")	146 (5-3/4")	147 (5-25/32")	Gold	182	
AN-DH015-MR	-					Mirror		
AN-DH015-HL	-					Satin		

Item No.	Old Item No.	A	D ₁	D ₂	D ₃	Material	Finish	Weight (g)
AN-LH005-GP	-	22	82 (3-15/64")	58 (2-9/32")	59 (2-21/64")	Stainless Steel (SUS 304)	Gold	50
AN-LH005-MR	-						Mirror	
AN-LH005-HL	-						Satin	
AN-LH008-GP	AN-LH001-GP	22	112 (4-13/32")	82 (3-15/64")	83 (3-17/64")		Gold	77
AN-LH008-MR	AN-LH001-MR						Mirror	
AN-LH008-HL	AN-LH001-HL						Satin	
AN-LH011-GP	-	22	136 (5-23/64")	106 (4-11/64")	107 (4-7/32")		Gold	92
AN-LH011-MR	-						Mirror	
AN-LH011-HL	-						Satin	
AN-LH015-GP	-	22	170 (6-11/16")	146 (5-3/4")	147 (5-25/32")	Gold	122	
AN-LH015-MR	-					Mirror		
AN-LH015-HL	-					Satin		