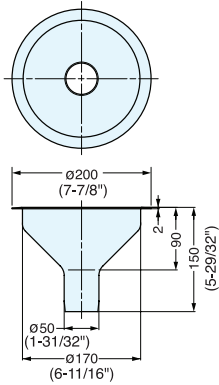


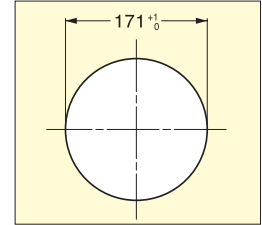
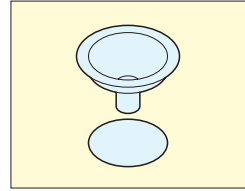
DRAIN SPOUT



AN-DH020



- Wide 6-11/16" diameter drain spout for use in food service environments.
- Lip outer diameter 7-7/8".
- Stainless steel construction for easy cleaning.
- 2" diameter tubing can be attached to the spout.



Cut Out Dimensions

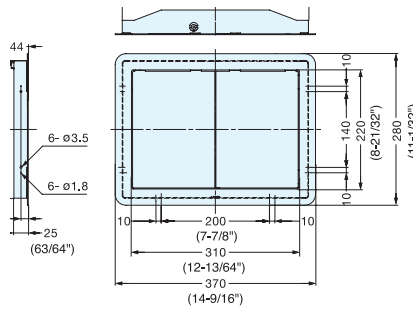
Item No.	Weight (g)	Box (pcs)	Carton (pcs)
AN-DH020	490	1	10

Material	Finish
304 Stainless Steel	Polished Mirror/Satin

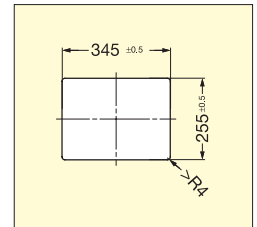
MULTI-PURPOSE LID (DOUBLE DOOR)



AZ-DD310/HL



- Synchronized doors allow for easy opening.
- 304 Stainless Steel lid and frame.



Cut Out Dimensions

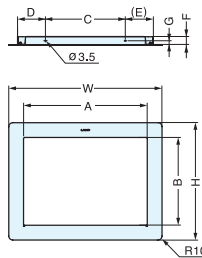
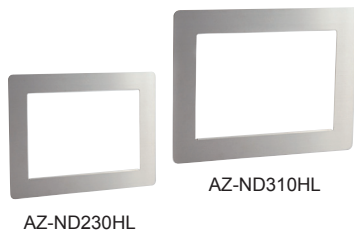
Item No.	Weight (kg)	Box (pcs)	Carton (pcs)
AZ-DD310/HL	2.2	1	10

Material	Finish
304 Stainless Steel	Satin

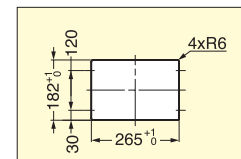
MULTI-PURPOSE LID (SQUARE BEZEL)



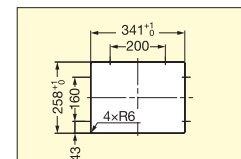
AZ-ND



- Corrosion resistant.
- 304 Stainless Steel



AZ-ND230HL Cut Out Dimensions



AZ-ND310HL Cut Out Dimensions

Item No.	Material	Finish	A	B	W	H				
AZ-ND230	Stainless Steel (SUS304)	Satin	234 (9-7/32")	160 (6-19/64")	308 (12-1/8")	234 (9-7/32")				
AZ-ND310HL			310 (12-13/64")	220 (8-21/32")	384 (15-1/8")	394 (15-33/64")				
Item No.	C	D	E	F	G	J	K	M	N	Weight (kg)
AZ-ND230HL	-	-	-	-	-	-	170	120	30	0.72
AZ-ND310HL	200	70	70	20	10	257	243	160	43	1.05