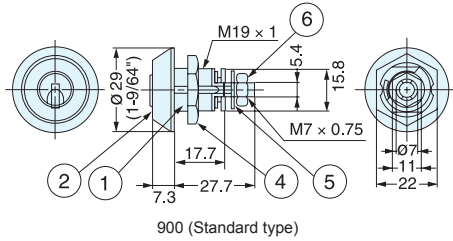


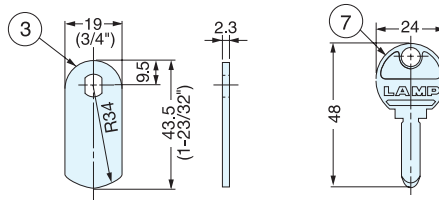
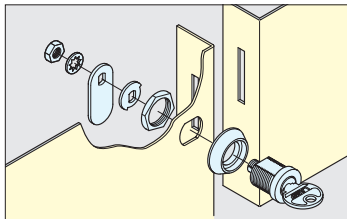
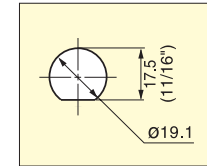
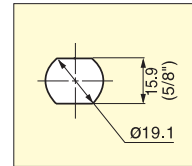
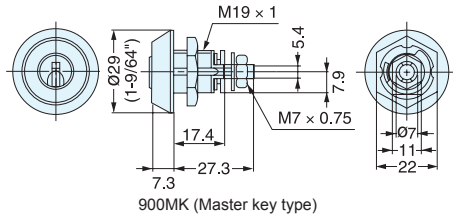
SHEET METAL CAM LOCK



900



- Brass cylinder cam lock.
- Reversible key.
- 90 degree cam rotation.
- Key is removable in locked position only. (Key works as a knob in unlocked position.)
- 1 million key changes available; Please specify keyed alike or differently when ordering.
- Master key type available at surcharge. (Maximum 2,520 key changes per master key.)



No.	Part Name	Material	Finish
①	Body	Brass	Chrome
②	Ring		
③	Cam	Steel	Yellow Zinc Chromate
④	Hex Nut		Nickel
⑤	Washer		Yellow Zinc Chromate
⑥	Hex Nut	Brass	Nickel
⑦	Key		

Item No.	Metal Thickness (mm)	Keys Included	Weight (g)	Box (pcs)	Carton (pcs)
900	0.8~8 (1/32"~5/16")	2	120	12	60
900MK (with Master Key)					

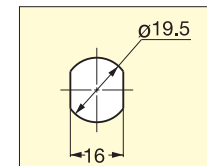
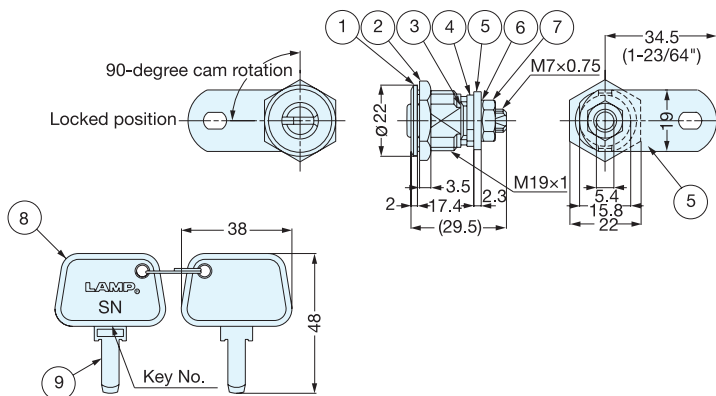
SHEET METAL CAM LOCK



SN-711-8



- Brass cylinder cam lock.
- 90 degree cam rotation.
- Key is removable in locked position only. "Keyed differently" is available by special order. (Up to 1,500 key changes.)
- * Extreme pressure on key when in unlocked position may cause damage to the lock.



No.	Part Name	Material	Finish/Color
①	Body	Brass	Chrome
②	Large Hex Nut	Steel	Yellow Zinc Chromate
③	Ring	304 Stainless Steel	Plain
④	Cam	Steel	Chromate
⑤	Plate		
⑥	Washer		
⑦	Small Hex Nut		
⑧	Cover	ABS	Black
⑨	Key	Brass	Nickel

Item No.	Metal Thickness (mm)	Keys Included	Weight (g)	Box (pcs)	Carton (pcs)
SN-711-8	0.1~9 (1/64"~23/64")	2	77	50	150