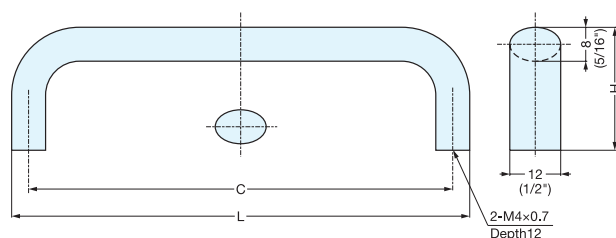


HANDLE



KK-H

• Silver ion coated on all finishes except black.



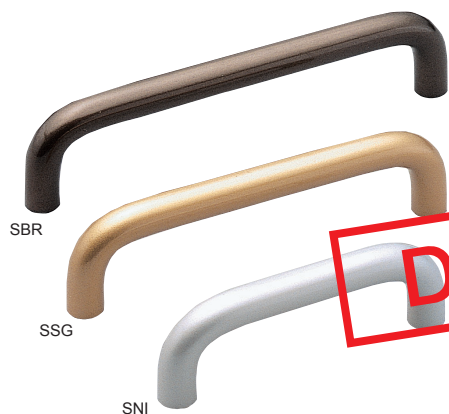
Item No.	Material	Finish/Color	L	C	H	Weight (g)	Box (pcs)	Carton (pcs)
KK-H80SNI	Aluminum Alloy	Nickel + Silver Ion Coating	78 (3-1/16")	70 (2-3/4")	28 (1-3/32")	20	25	200
KK-H80SSG		Satin Gold + Silver Ion Coating						
KK-H80SBR		Brown + Silver Ion Coating						
KK-H80BL		Black	108 (4-1/4")	100 (3-15/16")	29 (1-9/64")	25		
KK-H110SNI		Nickel + Silver Ion Coating						
KK-H110SSG		Satin Gold + Silver Ion Coating						
KK-H110SBR		Brown + v						
KK-H110BL		Black	128 (5-1/32")	120 (4-23/32")	30 (1-3/16")	30		
KK-H130SNI		Nickel + Silver Ion Coating						
KK-H130SSG		Satin Gold + Silver Ion Coating						
KK-H130SBR		Brown + Silver Ion Coating						
KK-H130BL		Black						

HANDLE

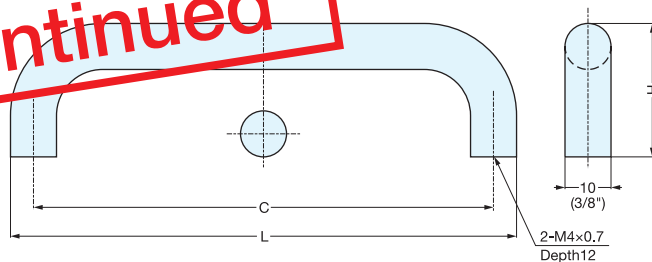


KK-M

• Silver ion coated handle.



Discontinued



Item No.	Material	Finish	L	C	H	Weight (g)	Box (pcs)	Carton (pcs)
KK-M80SNI	Aluminum Alloy	Nickel + Silver Ion Coating	80 (3-1/8")	70 (2-3/4")	28 (1-3/32")	20	25	200
KK-M80SSG		Satin Gold + Silver Ion Coating						
KK-M80SBR		Brown + Silver Ion Coating						
KK-M110SNI		Nickel + Silver Ion Coating	110 (4-5/16")	100 (3-15/16")	29 (1-9/64")	25		
KK-M110SSG		Satin Gold + Silver Ion Coating						
KK-M110SBR		Brown + Silver Ion Coating						
KK-M130SNI		Nickel + Silver Ion Coating	130 (5-1/8")	120 (4-23/32")	30 (1-3/16")	30		
KK-M130SSG		Satin Gold + Silver Ion Coating						
KK-M130SBR		Brown + Silver Ion Coating						