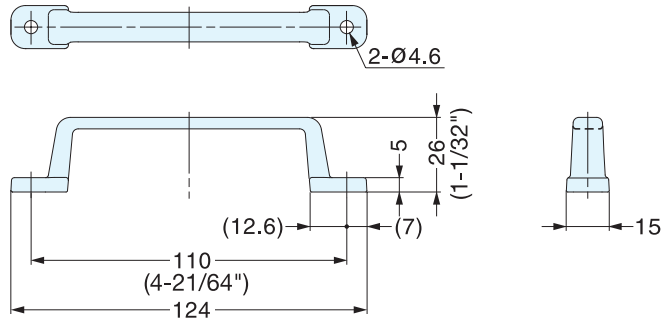


**HANDLE**



**FT-110S**

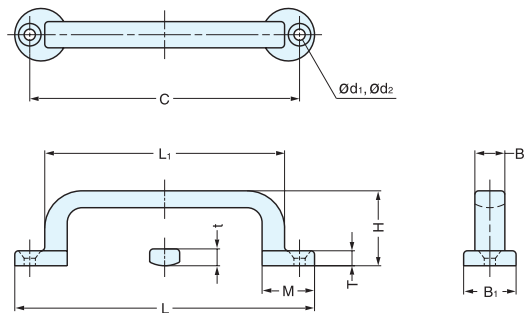


Item No.	Weight (g)	Box (pcs)	Carton (pcs)	Material	Finish
FT-110S	60	50	200	304 Stainless Steel	Satin

**HANDLE**



**FT-65, 80, 100**



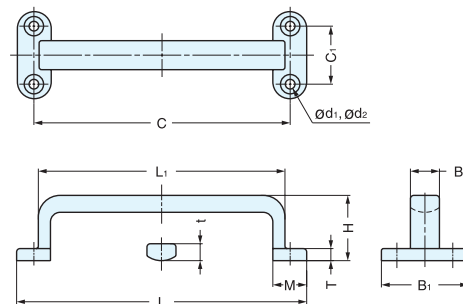
Material	Finish
304 Stainless Steel	Mirror

Item No.	L	L <sub>1</sub>	C	B <sub>1</sub>	B <sub>2</sub>	H	T	t	M	d <sub>1</sub>	d <sub>2</sub>	Weight (g)	Box (pcs)	Carton (pcs)	Screw
FT-65	65	47	57 ( 2-1/4" )	13	7	16 ( 5/8" )	3.5	4.0	13	3.3	6.4	19	40	480	3.1 × 16
FT-80	80	61	72 ( 2-27/32" )	14	8	20 ( 25/32" )	4.0	4.5	14		6.4	32	30	360	
FT-100	100	75	88 ( 3-15/32" )	18	10	25 ( 63/64" )	5.0	5.5	18	4.1	8.0	58	20	240	

**HANDLE**



**FT-120, 150**



Material	Finish
304 Stainless Steel	Mirror

Item No.	L	L <sub>1</sub>	C	C <sub>1</sub>	B <sub>1</sub>	B <sub>2</sub>	H	T	t	M	d <sub>1</sub>	d <sub>2</sub>	Weight (g)	Box (pcs)	Carton (pcs)	Screw
FT-120	120	102	106 ( 4-11/64" )	24	36	12	27 ( 1-1/16" )	5	7	14	4.1	8.0	105	10	120	3.8 × 20
FT-150	150	126	132 ( 5-3/16" )	30	45	15	33 ( 1-19/64" )	6	8	18	5.3	10.4	191	5	40	5.1 × 25