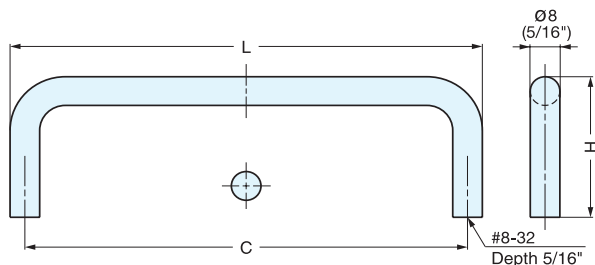


WIRE PULL



• Ideal for harsh and high corrosive environments.



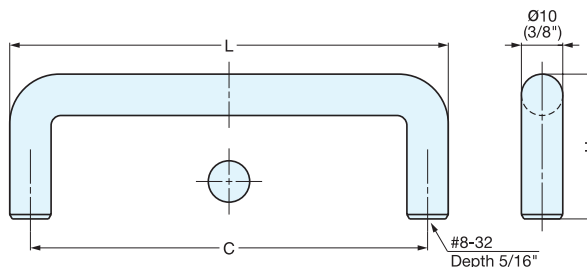
Item No.	L	C	H	Weight (g)	Box (pcs)	Carton (pcs)
SWP-630/S	84.2	76.2 (3")	34 (1-11/32")	71	20	200
SWP-635/S	96.9	88.9 (3-1/2")		78		
SWP-640/S	109.6	101.6 (4")		85		
SWP-696/S	104.0	96.0 (3-25/32")		91		

Material	Finish
316 Stainless Steel	Satin

WIRE PULL



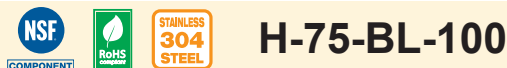
• Ideal for harsh and high corrosive environments.



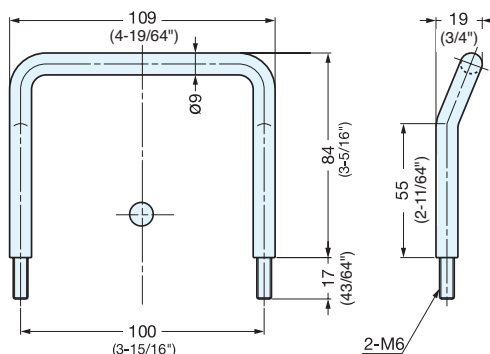
Item No.	L	C	H	Weight (g)	Box (pcs)	Carton (pcs)
SWF-640	111.0	101.5 (4")	35 (1-3/8")	90	20	160
SWF-650	136.5	127.0 (5")		110		160
SWF-660	162.0	152.5 (6")		130		120
SWF-690	238.0	228.5 (9")		200		120
SWF-6120	314.5	305.0 (12")		270		80

Material	Finish
316 Stainless Steel	Satin

OFFSET WIRE PULL



• Fastening nut not included.



Item No.	Weight (g)	Box (pcs)	Carton (pcs)
H-75-BL-100	130	80	400

Material	Finish
304 Stainless Steel	Mirror