

# COAT HOOK

STAINLESS  
304  
STEEL

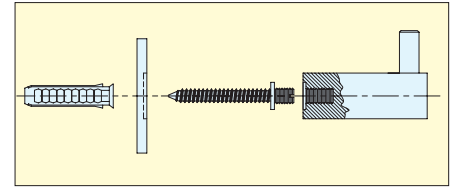
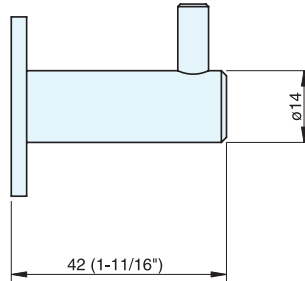
STAINLESS  
303  
STEEL

LOAD CAPACITY  
10 kg  
22 lbs

STEEL

# DSH-01

• Supplied with screw, and plastic expansion anchor.



Installation

| Item No. | Load Capacity (kg) | Weight (g) | Box (pcs) | Carton (pcs) | Material                | Finish |
|----------|--------------------|------------|-----------|--------------|-------------------------|--------|
| DSH-01   | 10 (22 lbs)        | 71         | 25        | 250          | 303/304 Stainless Steel | Satin  |

# COAT HOOK

STAINLESS  
304  
STEEL

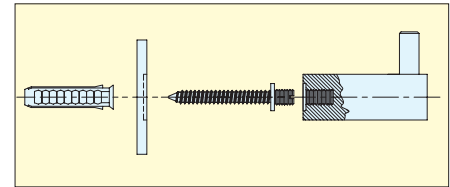
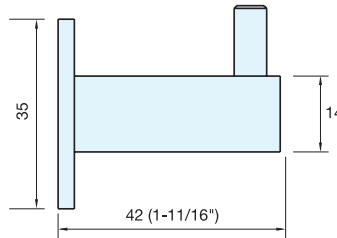
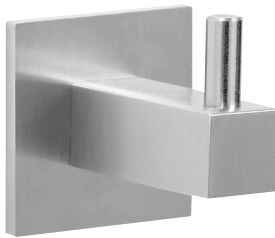
STAINLESS  
303  
STEEL

LOAD CAPACITY  
10 kg  
22 lbs

STEEL

# DSH-04

• Supplied with screw, and plastic expansion anchor.



Installation

| Item No. | Load Capacity (kg) | Weight (g) | Box (pcs) | Carton (pcs) | Material                | Finish |
|----------|--------------------|------------|-----------|--------------|-------------------------|--------|
| DSH-04   | 10 (22 lbs)        | 55         | 25        | 250          | 303/304 Stainless Steel | Satin  |

# COAT HOOK

STAINLESS  
304  
STEEL

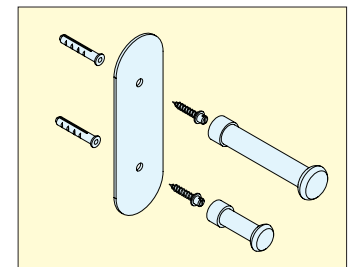
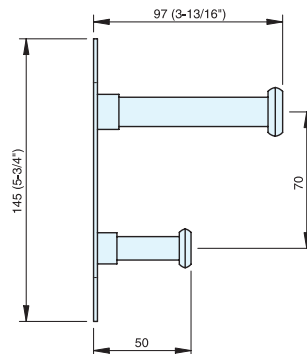
STAINLESS  
303  
STEEL

LOAD CAPACITY  
10 kg  
22 lbs

STEEL

# DSH-05

• Supplied with screws and plastic expansion anchors.



Installation

| Item No. | Load Capacity (kg) | Weight (g) | Box (pcs) | Carton (pcs) | Material                | Finish |
|----------|--------------------|------------|-----------|--------------|-------------------------|--------|
| DSH-05   | 10 (22 lbs)        | 280        | 1         | 10           | 303/304 Stainless Steel | Satin  |