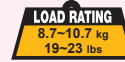
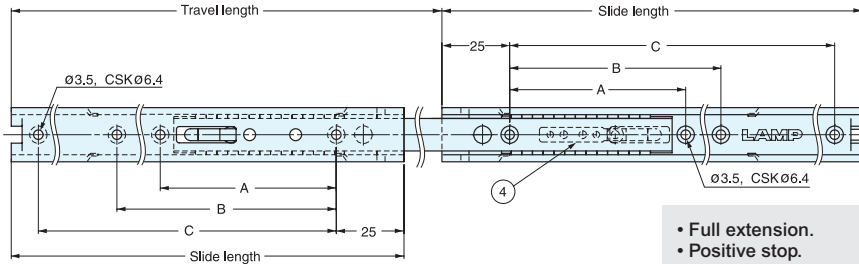
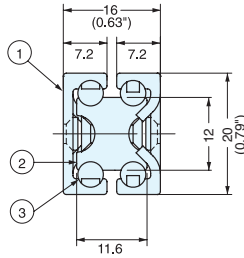


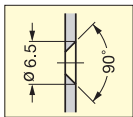
# FULL EXTENSION SLIDE (W/HOLD-OUT DETENT)



# AR3-K



- Full extension.
- Positive stop.
- Non-handed.
- Hold-out detent.
- Sold by each.



Hole Dimension (Outer Rail)

25.4 mm=1"

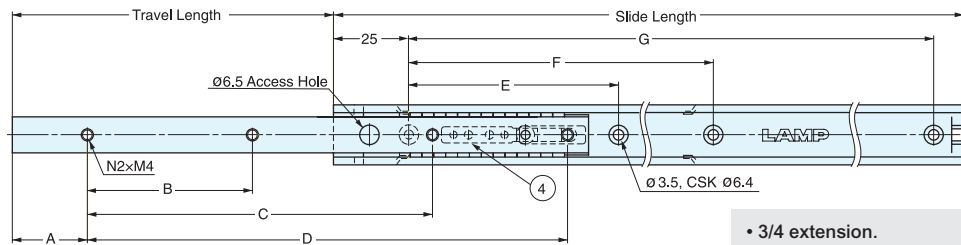
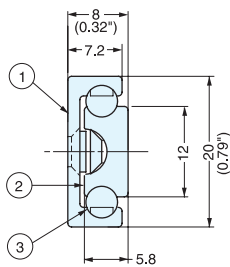
No.	Part	Material	Finish
①	Outer Rail	Aluminum	Anodized
②	Inner Rail		
③	Balls	Steel	-
④	Detent Catch	304 Stainless Steel	-

Item No.	Slide Length	Travel Length	A	B	C	Load Rating (kg/pair)	Weight (g)	Box (pcs)
AR3-K200	200 ( 7-7/8" )	214 ( 8-53/64" )	150	-	-	10.7 (23 lbs)	130	30
AR3-K300	300 (11-13/16")	314 (12-23/64")	130	250	-	10.2 (22 lbs)	198	
AR3-K400	400 ( 15-3/4" )	414 (16-19/64")		350	-	9.2 (20 lbs)	263	20
AR3-K500	500 (19-11/16")	514 (20-15/64")		450	-	8.7 (19 lbs)	304	

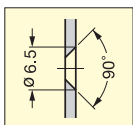
# 3/4 EXTENSION SLIDE (W/HOLD-OUT DETENT)



# AR2-K



- 3/4 extension.
- Positive stop.
- Non-handed.
- Hold-out detent.
- Sold by each.



Hole Dimension (Outer Rail)

25.4 mm=1"

No.	Part	Material	Finish
①	Outer Rail	Aluminum	Anodized
②	Inner Rail		
③	Balls	Steel	-
④	Detent Catch	304 Stainless Steel	-

Item No.	Slide Length	Travel Length	A	B	C	D	E	F	G	Load Rating (kg/pair)	Weight (g)	Box (pcs)
AR2-K200	200 ( 7-7/8" )	110 ( 4-7/16" )	25	60	160	-	150	-	-	12.7 (28 lbs)	64	50
AR2-K300	300 (11-13/16")	170 ( 6-11/16" )	45	100	230	-	130	250	-	11.2 (25 lbs)	97	
AR2-K400	400 ( 15-3/4" )	230 ( 9-1/16" )	45	150	270	330	130	280	350	9.7 (21 lbs)	130	
AR2-K500	500 (19-11/16")	290 (11-27/64")	45	190	340	430	130	280	450	8.7 (19 lbs)	162	