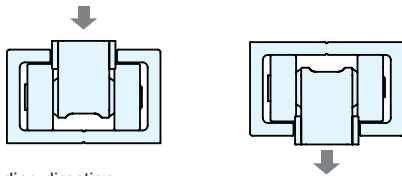
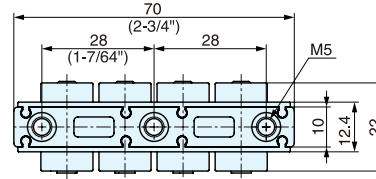


ROLLER CARRIAGE

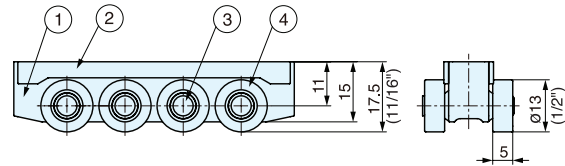


LGB-30CM

- Slide roller carriage with bearing for smooth slide operation.
- To be used in the combination of LGB30 guide rail.



Loading direction
Horizontal direction use only



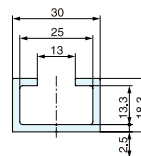
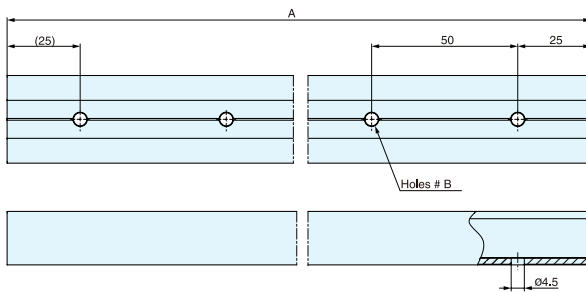
Item No.	Load Capacity (kgf)	Weight (g)
LGB-30CM	30 (66 lbs)	76

No.	Part Name	Material	Finish
①	Body	Zinc Alloy	Chrome
②	Plate	Polyethylene	Black
③	Shaft	304 Stainless Steel	Plain
④	Roller	Steel/Polyacetal	Black

GUIDE RAIL



LGB30



Item No.	A	B	Weight (g)
LGB30-400	400 (15-3/4")	8	195
LGB30-800	800 (31-1/2")	16	390
LGB30-2000	2000 (78-47/64")	40	875

Material	Finish
Aluminum	Anodized