

# LID STAY (CLEAN ROOM)

STAINLESS  
304  
STEEL

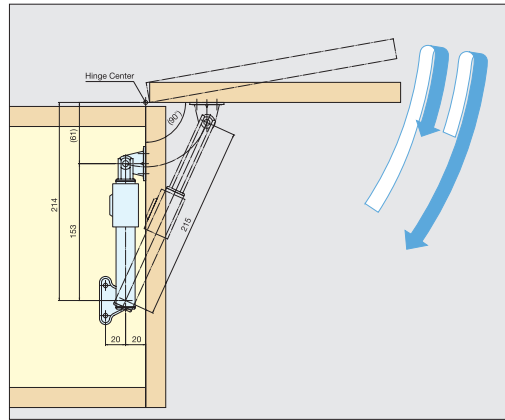
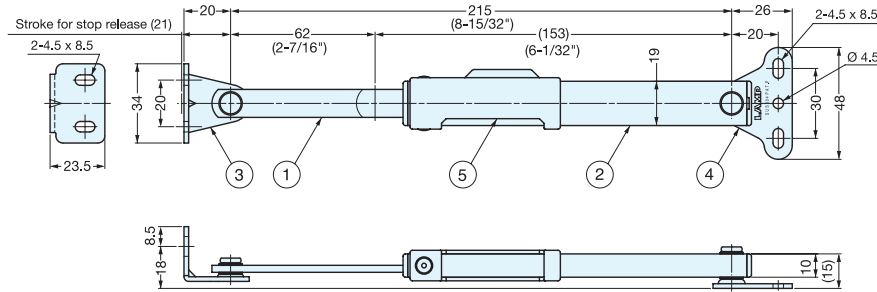
LOAD CAPACITY  
15 kg  
33 lbs



# LB-CV215A



- Holds lid or panel in fully opened position.
- Plastic bushing and end cap minimizes particles.
- No metal-to-metal contact.
- Ideal for clean room, semiconductor and food industry applications.
- Can be installed individually or in pairs.
- Non-Handed : Can be installed on left or right side.



\*Lid stay must be installed parallel to the sidewall.

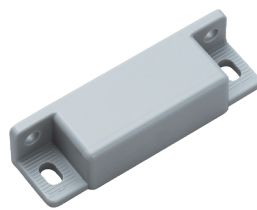
Item No.	Load Capacity (kg)	Weight (g)	Box (pcs)	Carton (pcs)	Material	Finish/Color
					LB-CV215A	15 (33 lbs)
					ABS	White

## CLEAN ROOM HARDWARE



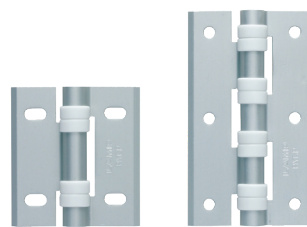
**MC-JM45**

Please see page 104 for details



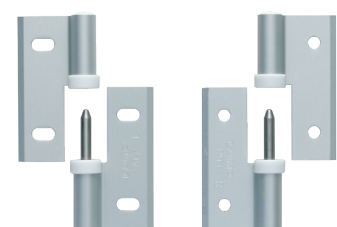
**MC-JM63G**

Please see page 104 for details



**HG-CV**

Please see page 228 for details



**HG-CV-65N**

Please see page 228 for details