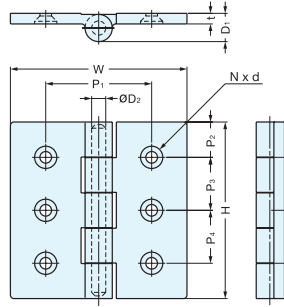
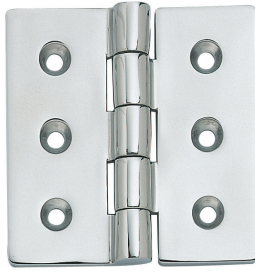


BUTT HINGE



LSF



LSF-100 shown

• 316 Stainless Steel construction ideal for harsh and highly corrosive environments.

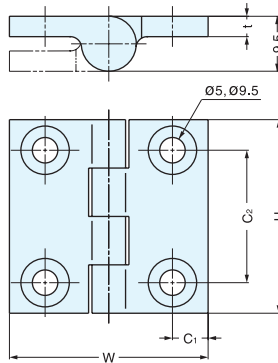
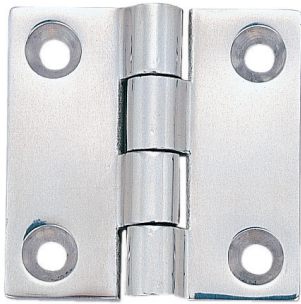
Material	Finish
316 Stainless Steel	Mirror

Item No.	H	W	P ₁	P ₂	P ₃	P ₄	t	D ₁	D ₂	Knuckles	N	d	Weight (g)	Box (pcs)	Carton (pcs)
LSF-50	50 (1-31/32")	50	35	15.0	20	-	5	14	6	3	4	M4	110	20	100
LSF-65	65 (2-9/16")	65	40	-	35	-	-	-	-	-	-	M5	190	-	80
LSF-75	75 (2-61/64")	75	50	17.5	40	-	6	16	8	5	6	M6	305	10	50
LSF-100	100 (3-15/16")	100	60	20.0	30	30	-	-	-	-	-	-	500	-	30

BUTT HINGE



28300, 28400



• 316 Stainless Steel construction ideal for harsh and highly corrosive environments.
 • Door weight: Max. 4 kg/pair (8.8 lbs/pair)
 • Door size: Max. W450 × H700 × t21 mm (W17-3/4" × H27-9/16" × t13/16")

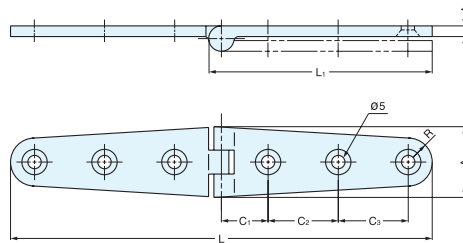
Material	Finish
316 Stainless Steel	Mirror

Item No.	H	W	t	C ₁	C ₂	Weight (g)	Box (pcs)	Carton (pcs)
28300	38 (1-1/2")	39 (1-17/32")	4	7.0	26	55	20	100
28400	50 (1-31/32")	50 (1-31/32")		7.5	34	90		

LEAF HINGE



50704, 50706



• 316 Stainless Steel construction ideal for harsh and highly corrosive environments.
 • Door weight: Max. 2.6 kg/pair (5.7 lbs/pair)

Material	Finish
316 Stainless Steel	Mirror

Item No.	L	L ₁	C ₁	C ₂	C ₃	A	R	t	Holes	Weight (g)	Box (pcs)	Carton (pcs)
50704	105 (4-9/64")	57	17.5	25	-	26.5 (1-3/64")	9	4	4	75	20	100
50706	158 (6-7/32")	84	19.5		25				6			