

# GLASS DOOR GRAVITY HINGE

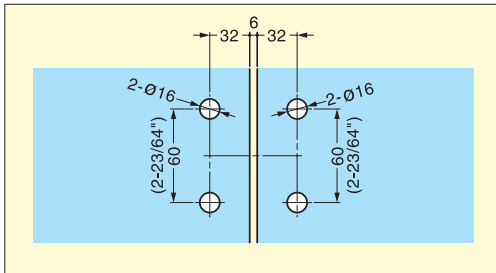
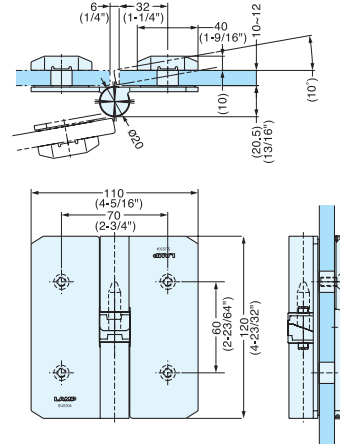


# XL-GH05-120



XL-GH05-120R is Shown

- Glass hinge with self closing feature.
- Stainless steel construction suitable for shower doors.
- Door will self close up to opening angle 170°.
- Door will stay open beyond 170°.
- Door moves up Max. 5 mm (3/16") at opening angle 90° or Max. 10 mm (3/8") at 170°.
- Door Size: Max. W750 mm × H2000 mm (W29-1/2" × H78-3/4")
- Door Weight: Max. 45 kg/pair (99 lbs/pair)
- Sold in pairs.



Cut Out Dimensions

Item No.	Glass Thickness (mm)	Weight (g)/pair	Box (pair)	Carton (pair)
XL-GH05-120L	10~12 (3/8"~1/2")	1624	1	5
XL-GH05-120R				

Material	Finish
304 Stainless Steel	Mirror

# GLASS DOOR GRAVITY HINGE

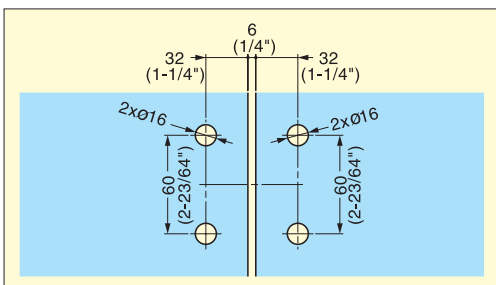
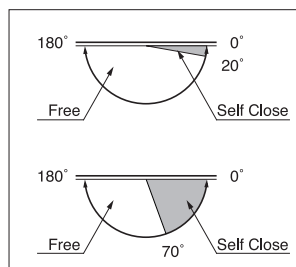
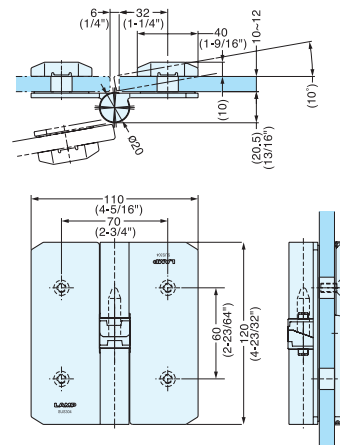


# XL-GH05F-120



XL-GH05F-120R is Shown

- Glass hinge with self closing feature.
- Stainless steel construction suitable for shower doors.
- Door Size: Max. W750 mm × H2000 mm (W29-1/2" × H78-3/4")
- Door Weight: Max. 45 kg/pair (99 lbs/pair)
- Sold in pairs.
- Self-close range can be changed and door will self close at opening angle 20° or 70°.
- Door moves up Max. 1.5 mm (1/16") at opening angle 20° or Max. 5 mm (3/16") at 70°.



Cut Out Dimensions

Item No.	Glass Thickness (mm)	Weight (g)/pair	Box (pair)	Carton (pair)
XL-GH05F-120L	10~12 (3/8"~1/2")	1640	1	5
XL-GH05F-120R				

Material	Finish
304 Stainless Steel	Mirror