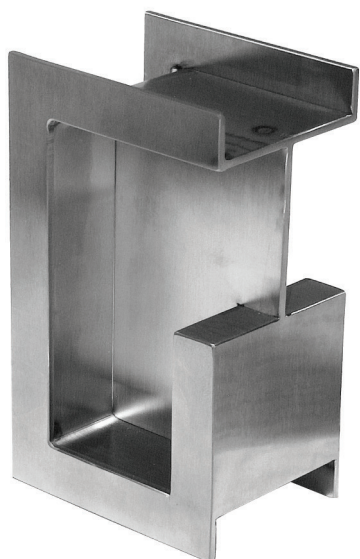


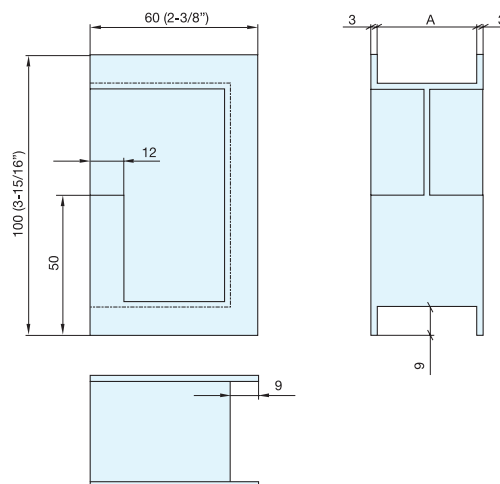
SLIDING DOOR HANDLE

STAINLESS
304
STEEL

DSI-4253



- Contemporary handle design that can be accessed from door front, back, or edge.
- Requires adhesive for installation (Such as 2-part epoxy, not supplied.)



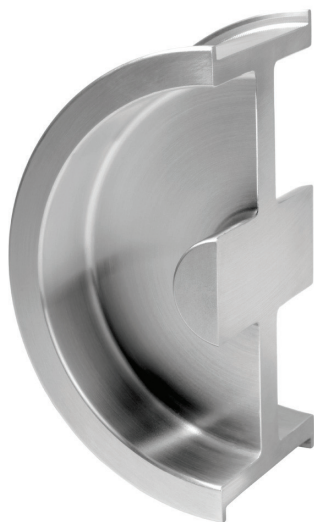
Item No.	A	Weight (g)	Box (pcs)	Carton (pcs)	Material	Finish
DSI-4253-35	35.0 (1-3/8")	495 (1.09 lbs)	1	10	304 Stainless Steel	Satin
DSI-4253-38	38.0(1-1/2")	505 (1.11 lbs)				
DSI-4253-40	40.0 (1-9/16")	515 (1.14 lbs)				
DSI-4253-43	43.0 (1-11/16")	530 (1.17 lbs)				
DSI-4253-45	44.5 (1-3/4")	545 (1.20 lbs)				

SLIDING DOOR HANDLE

STAINLESS
304
STEEL

BRASS

DSI-3250

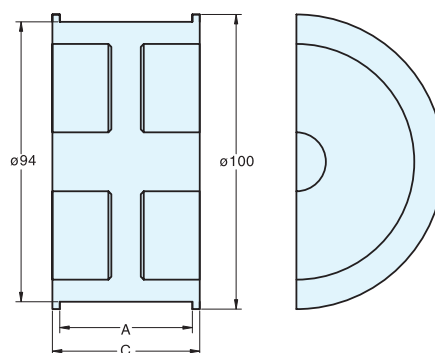


Satin



Antique Brass

- Contemporary handle design that can be accessed from door front, back, or edge.
- Requires adhesive for installation (Such as 2-part epoxy, not supplied.)



Item No.	C	A	Weight (g)	Box (pcs)	Carton (pcs)	Material	Finish
DSI-3250-12-1	17 (11/16")	12.7 (1/2")	280 (0.6 lbs)	1	10	304 Stainless Steel	Satin
DSI-3250-35	39 (1-17/32")	35.0 (1-3/8")	440 (0.9 lbs)				
DSI-3250-35-AB			49 (1-15/16")				
DSI-3250-45	49 (1-15/16")	45.0 (1-49/64")	550 (1.2 lbs)				
DSI-3250-45-AB			54 (2-1/8")				
DSI-3250-50	54 (2-1/8")	50.0 (1-31/32")	670 (1.5 lbs)	Brass (AB model only)	Antique Brass (AB)		