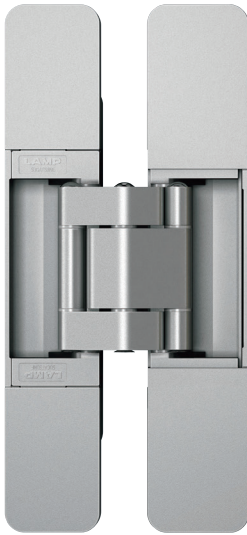


# 3-WAY ADJUSTABLE CONCEALED HINGE



# HES3D-160



HES3D-160SL



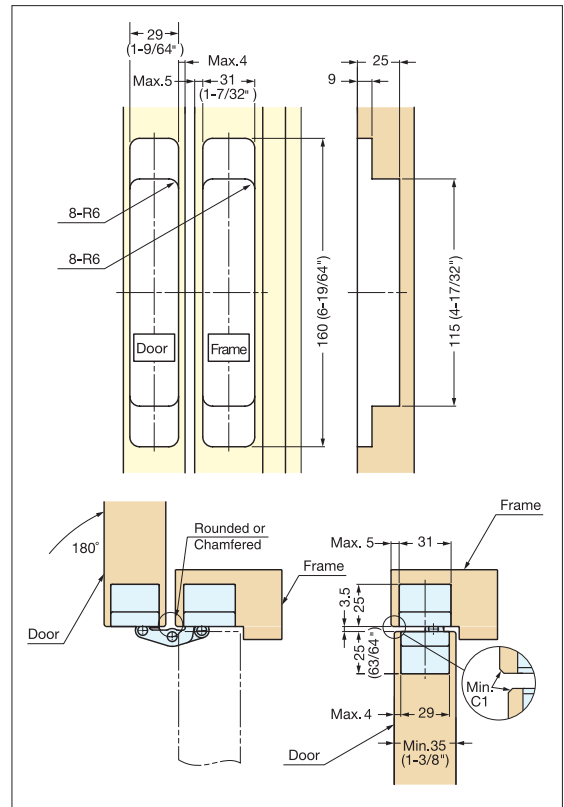
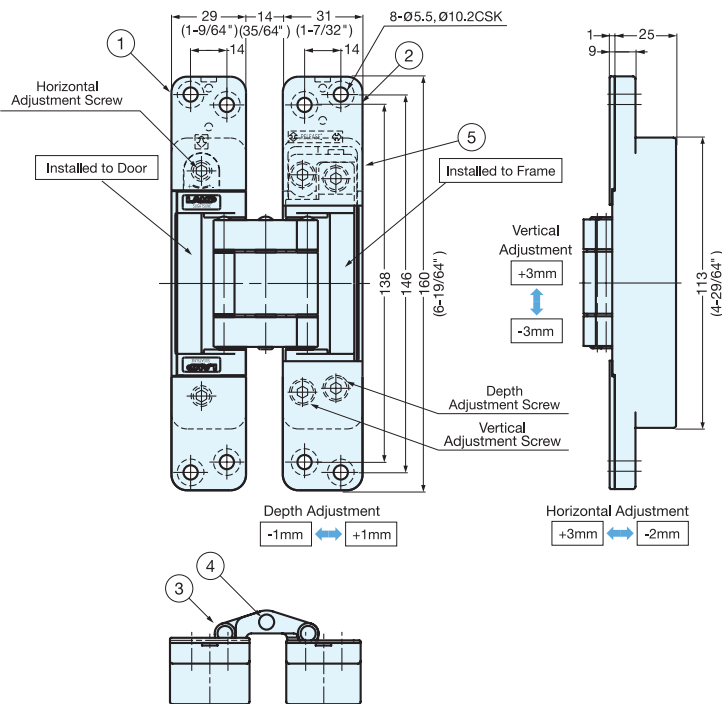
HES3D-160GL

- 3-WAY adjustment function allows vertical, horizontal, and depth adjustment after hinge installed.
- Easy installation and adjustment.
- Successfully passed 300,000 open/close private cycle tests.
- Supplied with steel flat head screw.
- Cover hides all screw heads for clean appearance.
- Door weight: Max. 45 kg (99 lbs)/2 pcs, 60 kg (130 lbs)/3 pcs
- Door Thickness: Min. 35 mm (1-3/8")
- Max. Door Size: H 2400 mm × W 900 mm (H 94-1/2" × W 35-7/16")

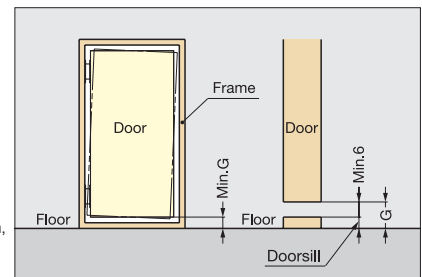
Item No.	Finish/Color
HES3D-160SL	Matte Silver
HES3D-160GL	Matte Gold

Item No.	Weight (g)	Box (pcs)	Carton (pcs)
HES3D-160SL	700	2	20
HES3D-160GL			

No.	Part Name	Material	Finish/Color
①	Body	Zinc Alloy	Matte Silver Matte Gold
②	Base Frame		
③	Arm	Aluminum	
④	Pin	304 Stainless Steel	-
⑤	Cover	ABS	Matte Silver, Matte Gold



Bore Dimensions



To determine the door and frame dimension, (G) must be taken into account.  
G = Min. 6 mm + doorsill