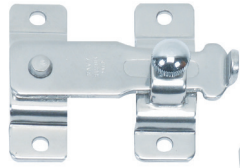


BAR LATCH



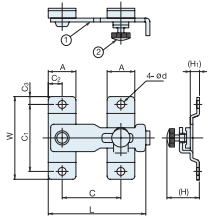
BL



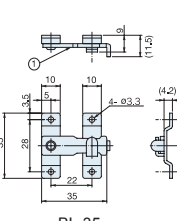
BL-55



BL-35



BL-45 ~ 120



BL-35

- Latch with knurled thumb screw on female strike.
- Tighten screw to keep latch closed.
- No thumb screw on BL-35.

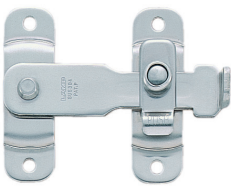
No.	Part Name	Material	Finish
①	Body, Strike	304 Stainless Steel	Polished
②	Thumb Screw	Brass	Chrome

Item No.	L	W	A	C	C ₁	C ₂	C ₃	H	H ₁	d	Weight(g)	Box (pcs)	Carton (pcs)
BL-35	35 (1-3/8")	35 (1-3/8")	10	22	28	5.0	3.5	-	4.2	3.3	19	30	1200
BL-45	45 (1-49/64")	40 (1-37/64")	13	28	32	6.5	4.0	15 (19/32")	4.5	4.8	28	20	900
BL-55	55 (2-11/64")	46 (1-13/16")	16	35	37	8.0	4.5	19 (3/4")	6.0	4.0	50	10	720
BL-80	81 (3-3/16")	65 (2-9/16")	20	52	53	10.0	6.0	23 (29/32")	7.0	4.8	100	5	360
BL-100	100 (3-15/16")	80 (3-5/32")	25	60	66	12.5	7.0	29 (1-6/64")	8.0	5.5	200	5	150
BL-120	120 (4-23/32")	100 (3-15/16")	30	75	80	15.0	10.0	30 (1-3/16")	8.0	6.5	295	5	100

SPRING LOADED BAR LATCH



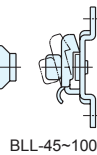
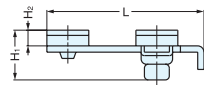
BLL



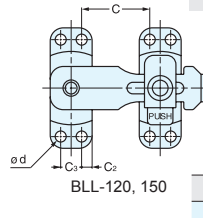
BLL-100



BLL-45

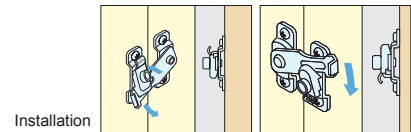


BLL-45~100



BLL-120, 150

- Latch bolt snaps into the strike to prevent accidental release.
- Push tab on strike to release.



Installation

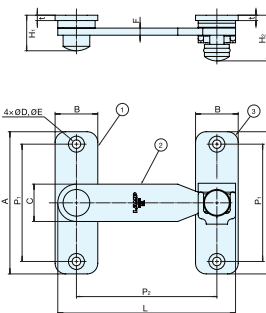
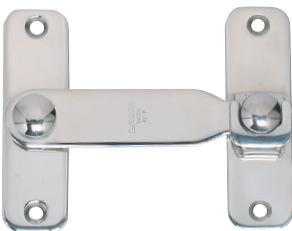
Material	Finish
304 Stainless Steel	Polished

Item No.	L	W	A	C ₁	C ₂	C ₃	H ₁	H ₂	C	d	Weight (g)	Box (pcs)	Carton (pcs)	Screw
BLL-45	48 (1-57/64")	40 (1-37/64")	13.0	32	6.50	-	17.0	4.5	23± 3 (29/32" ± 1/8")	3.2	28	20	400	3.0 × 10
BLL-60	63 (2-31/64")	46 (1-13/16")	16.0	37	8.00	-	20.0	6.0	34± 4 (1-11/32" ± 5/32")	4.2	50	10	200	3.5 × 16
BLL-80	85 (3-11/32")	65 (2-9/16")	20.0	53	10.00	-	22.5	7.0	47± 7 (1-27/32" ± 9/32")	5.0	100	10	100	4.5 × 16
BLL-100	105 (4-1/8")	80 (3-5/32")	25.0	66	12.50	-	26.5	8.0	59± 7 (2-21/64" ± 9/32")	5.5	182	8	80	5.0 × 20
BLL-120	127 (5")	100 (3-15/16")	28.5	80	6.75	15	28.0	8.0	56±10 (2-13/64" ± 25/64")	5.2	270	6	60	5.0 × 20
BLL-150	155 (6-3/32")	120 (4-23/32")	30.5	95	7.25	16	28.0	8.0	74±14 (2-29/32" ± 35/64")	5.2	350	6	60	5.0 × 20

BAR LATCH



BLT



- 304 stainless steel bar latch.
- Thick material used for durability.
- Latch with thumb screw on bar. Rubber ring on thumb screw to improve grip.
- Tighten screw to keep latch closed.

Material	Finish/Color
304 Stainless Steel	Polished
Nitrile rubber	Black

Item No.	L	P ₁	P ₂	A	B	C	D	E	F	H ₁	H ₂	t	Weight (g)	Box (pcs)	Carton (pcs)	Screw
BLT-45	45 (1-49/64")	30	33	40 (1-37/64")	14	12	3.5	6.0	2.0	12.0	16.0	2	31	20	400	3.1 × 20
BLT-60	60 (2-23/64")	37	45	48 (1-57/64")	17	15	3.8	7.5	2.5	14.5	17.5	2	54	10	200	3.5 × 20
BLT-80	80 (3-5/32")	53	62	65 (2-9/16")	21	18	4.3	8.0	3.0	17.0	22.0	3	95	10	100	3.8 × 20
BLT-100	100 (3-15/16")	66	79	80 (3-5/32")	24	21	4.8	9.0	4.0	19.8	25.5	3	177	8	80	4.5 × 20
BLT-120	120 (4-23/32")	73	98	90 (3-35/64")	28	24	5.1	10.0	4.0	22.0	27.5	4	243	8	80	4.5 × 20