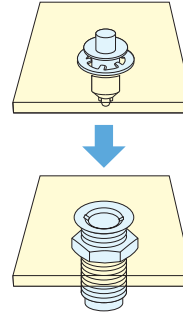


# PUSH LOCK FASTENER (MINI/BUTTON TYPE)

## 255F, 155F

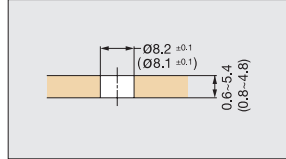


- 2 piece fastener allows for fast and easy access with complete removal of panel.
- Attach socket into outer panel / plug into removable panel.
- Insert plug into socket and push to lock / unlock.
- Flush locked design prevents snagging.
- Fastens plastic or sheet metal panels.



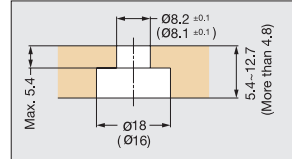
### ■ Preparation (Plug)

Board Thickness (P) = 0.6~5.4 (0.8~4.8)



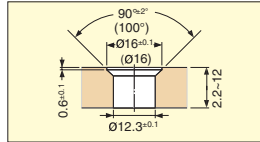
\* ( ) dimension for 155F

Board Thickness (P) = 5.4~12.7 (More than 4.8)



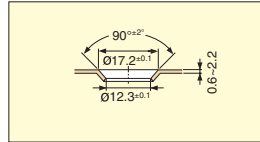
### ■ Preparation (Socket)

Board Thickness = 2.2~12

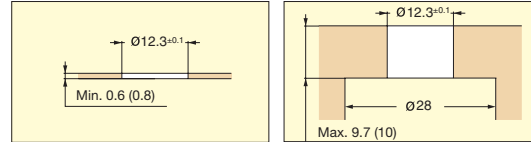


\* ( ) dimension for 155F

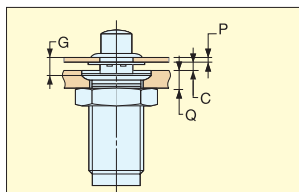
Board Thickness = 0.6~2.2



Board Thickness = 0.6~9.7 (0.8~10)

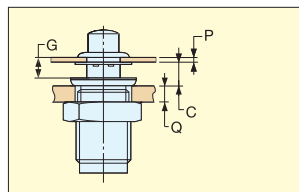


### ■ Grip Dimensions

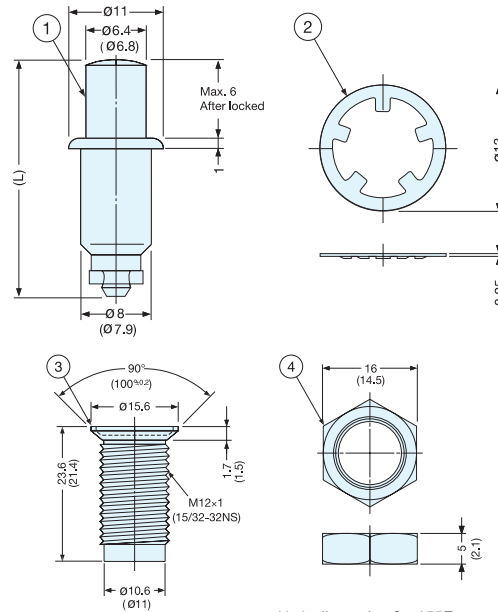


C = 0~2.2 (0~2.5)  
G = P + C + 0.7  
Q = 2.2~12

\* ( ) dimension for 155F



C = More than 2.3 (2.2)  
G = P + C - 1.4  
Q = 0.6~9.7



\* ( ) dimension for 155F

### ■ 255F

No.	Part Name	Material	Finish
①	Plug	Polyacetal	Black
②	Ring	Steel	
③	Socket	Polyacetal	
④	Nut		

### ■ 155F

No.	Part Name	Material	Finish
①	Plug	Brass	Chrome
②	Ring	304 Stainless steel	Plain
③	Socket	Zinc Alloy	Chromate
④	Nut	Steel	

Item No.	Grip Dimension G	Plug Dimension L	Retaining Force (kg)	Weight (g)	Item No.	Grip Dimension G	Plug Dimension L	Retaining Force (kg)	Weight (g)
255F-01-3	1.2~2.8	23.5	15 (33 lbs)	6	155F-01-1	1.2~2.8	21.5	15 (33 lbs)	6
255F-03-3	2.8~4.4	25.0			155F-03-1	2.8~4.4	23.0		
255F-05-3	4.4~6.0	26.5			155F-05-1	4.4~6.0	24.5		