

PUSH LOCK FASTENER (MINI/FLUSH TYPE)

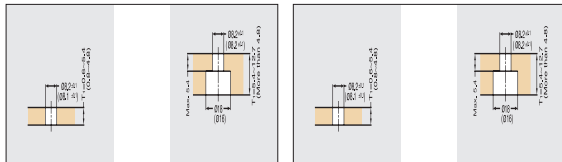
252F, 152F



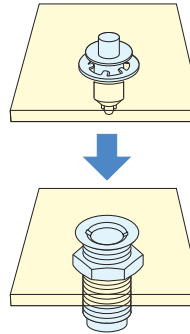
- 2 piece fastener allows for fast and easy access with complete removal of panel.
- Attach socket into outer panel/plug into removable panel.
- Insert plug into socket and push to lock/unlock.
- Flush locked design prevents snagging.
- Fastens plastic or sheet metal panels.

■ Preparation (Plug)

Board Thickness = 0.6~5.4 (0.8~4.8) Board Thickness = 5.4~12.7 (More than 4.8)

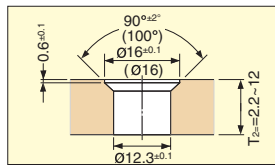


* () dimension for 152F



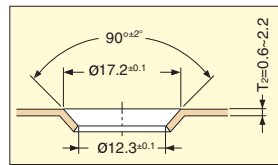
■ Preparation (Socket)

Board Thickness = 2.2~12

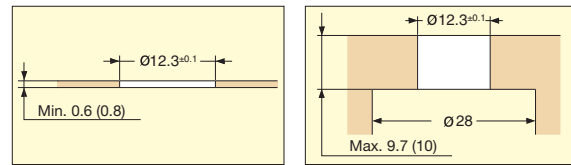


* () dimension for 152F

Board Thickness = 0.6~2.2

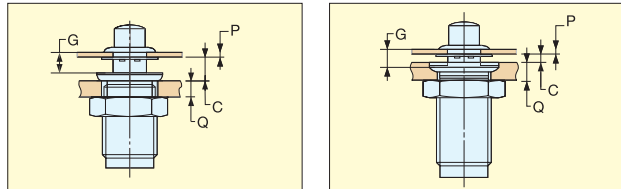


Board Thickness = 0.6~9.7 (0.8~1.0)



* () dimension for 152F

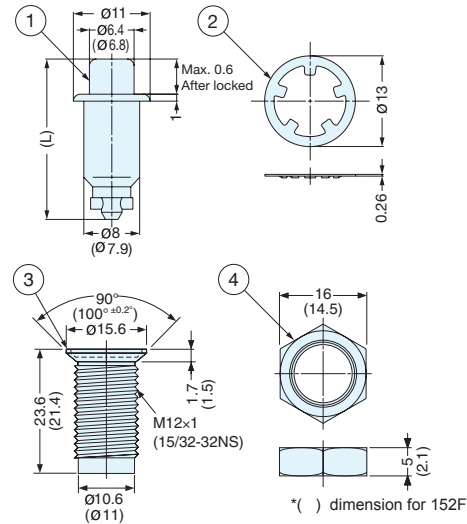
■ Grip Dimensions



C = 0~2.2 (0~2.5)
G = P + C + 0.7
Q = 2.2~12

* () dimension for 152F

C = More than 2.3 (2.2)
G = P + C - 1.4
Q = 0.6~9.7 (0.8~1.0)



* () dimension for 152F

■ 252F

No.	Part Name	Material	Finish
①	Plug	Polycetal	Black
②	Ring	Steel	
③	Socket	Polycetal	
④	Nut		

■ 152F

No.	Part Name	Material	Finish
①	Plug	Brass	Chrome
②	Ring	304 Stainless steel	Plain
③	Socket	Zinc Alloy	Chromate
④	Nut	Steel	

Item No.	Grip Dimension G	Plug Dimension L	Retaining Force (kg)	Weight (g)
252F-01-3	1.2~2.0	18.5	15 (33 lbs)	6
252F-02-3	2.0~2.8	19.0		
252F-03-3	2.8~3.6	20.0		
252F-04-3	3.6~4.4	20.5		
252F-05-3	4.4~5.2	21.5		
252F-06-3	5.2~6.0	22.5		

Item No.	Grip Dimension G	Plug Dimension L	Retaining Force (kg)	Weight (g)
152F-01-1	1.2~2.0	16.5	15 (33 lbs)	6
152F-02-1	2.0~2.8	17.0		
152F-03-1	2.8~3.6	18.0		
152F-04-1	3.6~4.4	18.5		
152F-05-1	4.4~5.2	19.5		
152F-06-1	5.2~6.0	20.5		