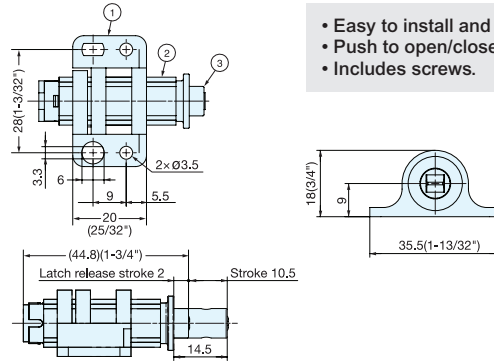
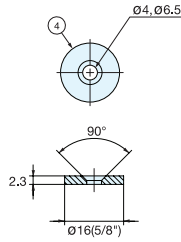
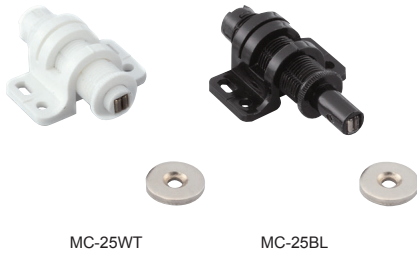


# MAGNETIC MINI TOUCH LATCH



MC-25



- Easy to install and adjust.
- Push to open/close.
- Includes screws.

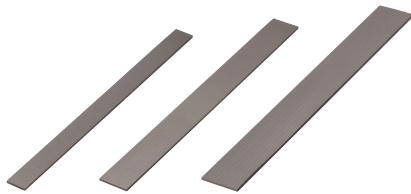
Item No.	Color	Magnetic Force (kg)	Weight (g)	Box (pcs)	Carton (pcs)
MC-25BL	Black	0.5 kg (1.1 lbs)	10	30	600
MC-25BL					

No.	Part Name	Material	Finish/Color
①	Body	Polypropylene	Black/White
②	Latch	Polypropylene	Black/White
③	Magnet	Ferrite	-
④	Counterplate	Steel	Yellow Zinc Chromate

# MAGNETIC STRIP

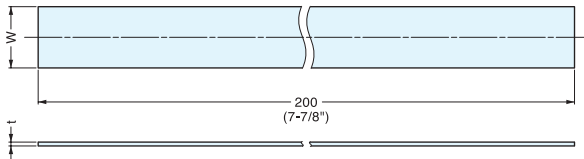


NMS



- Easy to trim, strong magnetic strips.
- Each strip 7-7/8" long-cut to desired length.
- Adhesive backing for easy installation.

Note: 1) Not for use in applications with high temperature (80°C) or humidity.  
2) Do not use to secure/support heavy objects.

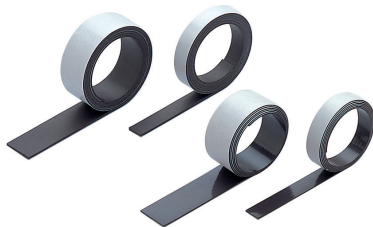


Item No.	W	t	Magnetic Force (kg/cm <sup>2</sup> )	Weight (g)	Box (pcs)
NMS-1-200	10	0.8	0.39 kg/cm <sup>2</sup> (5.5 psi)	10	500
NMS-2-200	16			16	
NMS-3-200	21			21	
NMS-4-200	19	1.5	0.55 kg/cm <sup>2</sup> (7.8 psi)	19	250
NMS-5-200	30			30	
NMS-6-200	39			39	

# MAGNETIC STRIP (RUBBER ROLL TYPE)

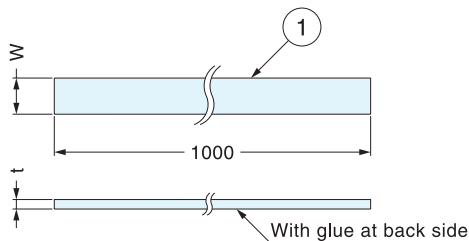


KMS



- Easy to trim, strong magnetic strips.
- Each strip available as a roll, 39-3/8" long-cut to desired length.
- Adhesive backing for easy installation.

Note: 1) Not for use in applications with high temperature (80°C) or humidity.  
2) Do not use to secure/support heavy objects.



Item No.	W	t	Magnetic Force (kg)	Weight (g)	Box (pcs)
KMS-1-1000	13.0	0.8	0.06 kg/cm <sup>2</sup> (0.85psi)	37	1
KMS-2-1000	19.1			54	
KMS-3-1000	25.4			77	
KMS-4-1000	12.7	1.5	0.09 kg/cm <sup>2</sup> (1.28psi)	66	
KMS-5-1000	19.1			100	
KMS-6-1000	25.4			140	