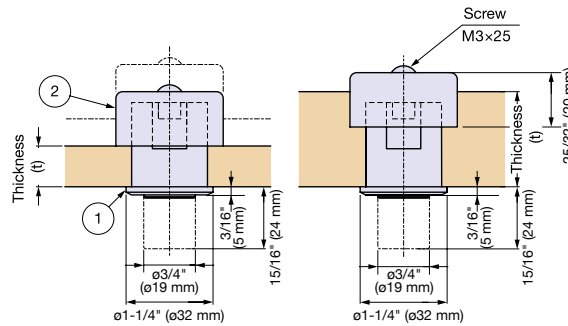




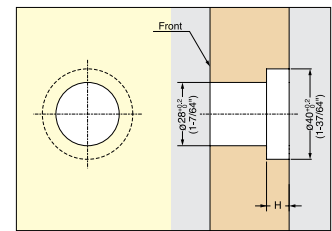
Zwei L Push Knob



ZL-1908



• Includes stainless steel screw.



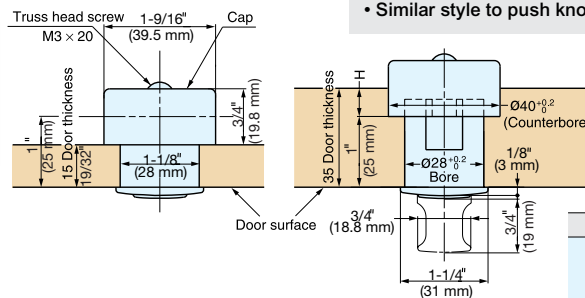
Cut Out Dimensions

| Item No. | No. | Part Name | Material | Finish/Color | Door Thickness (t) | Counterbore Depth (H) |
|----------|-----|---------------------------|---------------------|--------------|----------------------------------|----------------------------------|
| ZL-1908 | ① | Push Knob (Base Included) | 316 Stainless Steel | Zwei L | 1/2" ~ 15/16" (13 ~ 23 mm) | 0 |
| | ② | Body | ABS | Black | 15/16" ~ 1-5/16" (24 ~ 33 mm) | Door Thickness 15/16" (23 mm) |
| | ③ | Case | Zinc Alloy, ABS | Black | | |

PUSH KNOB



PK-03



- Knob can be pushed in when not in use.
- For door thickness 9/16"~1". (15~25 mm)
- Can be used on thickness up to 1-3/8" (35 mm) by counterboring.
- Similar style to push knob latches PKL-08 (P.136).

| Material | Finish/Color |
|------------|---|
| Zinc Alloy | Black Nickel (BN) Chrome (CR) Gold (GA) |
| ABS | Black |

| Item No. | Finish | Weight (g) | Box (pcs) | Carton (pcs) |
|----------|--------------|------------|-----------|--------------|
| PK-03/GA | Gold | 67 | 20 | 200 |
| PK-03/CR | Chrome | | | |
| PK-03/BN | Black Nickel | | | |

| Door Thickness | H (Counterbore) |
|----------------|-----------------------|
| 15~25 mm | None |
| 26~35 mm | H = Door Thickness-25 |