

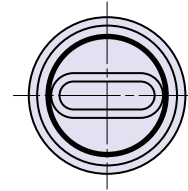
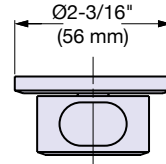
Zwei L Thumbturn

STAINLESS
316
STEEL

ZL-1401-SMR



• Ø2-3/16" (56 mm) (Material: 316 Stainless Steel).



Item No.	Material	Finish/Color	Weight (g)	Box (pcs)
ZL-1401-SMR	316 Stainless Steel	Zwei L	305	1

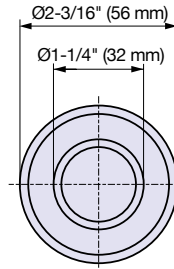
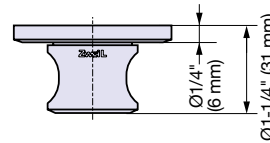
Zwei L Thumbturn

STAINLESS
316
STEEL

ZL-1402



• Ø2-3/16" (56 mm) (Material: 316 Stainless Steel).
• For use with ZL-1302 (P.26).
• Please use ZL-1403 for thumbturn knob.



Item No.	Material	Finish/Color	Weight (g)	Box (pcs)
ZL-1402	316 Stainless Steel	Zwei L	251	1

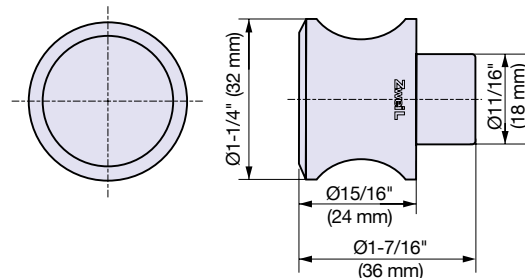
Zwei L Thumbturn Knob

STAINLESS
316
STEEL

ZL-1403



• Ø2-3/16" (56 mm) (Material: 316 Stainless Steel).
• For use with profile cylinder, etc. (Not supplied).
• Works with ZL-1202 (P.26).
• Does not work with indicators.



Item No.	Material	Finish/Color	Weight (g)	Box (pcs)
ZL-1403	316 Stainless Steel	Zwei L	198	1