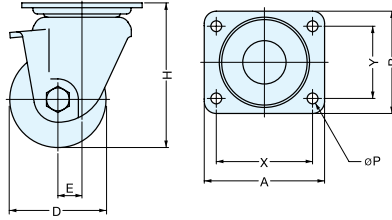


LOW PROFILE HEAVY DUTY CASTER



UHG

CASTERS & LEVELING GLIDES



- Low profile and heavy duty up to 1795 lbs (816kg), ideal for manufacturing equipment.
- Sealed ball bearing swivel assembly provides smooth and long-term service.
- Hexavalent chromium free. Using trivalent chromium for RoHS compliance.
- Choose wheel type from Phenolic, Reinforced Nylon, MC Nylon or Electro-conductive MC Nylon.
- All wheels equipped with heavy duty ball bearing.

Part Name	Material	Finish
Body / Mounting Plate	Steel	Clear Zinc Chromate (Trivalent Chromium)
Wheel	Phenolic Resin (PB)	Black
	Reinforced Nylon (GFB)	
	MC Nylon (MC)	
	Electro-conductive MC Nylon (MCE)	

Item No.	Bearin in wheels	D	Wheel Width	H	A	B	X	Y	P	E	Swivel Radius	Load Capacity	Weight (g)	Box (pcs)	Carton (pcs)
UHG-50 (PB,MC,MCE)	With Bearing	1-31/32" (50 mm)	1-1/2" (38 mm)	3-1/8" (79 mm)	3-5/16" (84 mm)	3-5/16" (84 mm)	2-17/32" (64 mm)	2-17/32" (64 mm)	11/32" (8.5 mm)	7/16" (11 mm)	1-15/16" (49 mm)	898 lbs (408 kg)	820	20	200
UHG-65 (PB,GFB,MC,MCE)		2-9/16" (65 mm)	1-7/8" (48 mm)	3-13/16" (97 mm)	3-15/16" (100 mm)	3-15/16" (100 mm)	3-1/16" (78 mm)	3-1/16" (78 mm)	13/32" (10.5 mm)	9/16" (14 mm)	2-1/4" (57 mm)	1122 lbs (510 kg)	1540	12	120
UHG-75 (PB,GFB,MC,MCE)		2-15/16" (75 mm)	1-7/8" (48 mm)	4-7/32" (107 mm)	3-15/16" (100 mm)	3-15/16" (100 mm)	3-1/16" (78 mm)	3-1/16" (78 mm)	13/32" (10.5 mm)	9/16" (14 mm)	2-1/4" (57 mm)	1347 lbs (612 kg)	1625	12	120
UHG-80MC		3-5/32" (80 mm)	1-7/8" (48 mm)	4-23/32" (120 mm)	3-15/16" (100 mm)	3-11/32" (85 mm)	3-5/32" (80 mm)	2-3/8" (60 mm)	11/32" (9 mm)	25/32" (20 mm)	2-7/16" (62 mm)	1795 lbs (816 kg)	1680	12	120
UHG-100MC		3-15/16" (100 mm)	1-7/8" (48 mm)	5-1/2" (140 mm)	5-29/32" (150 mm)	4-11/32" (110 mm)	4-3/4" (121 mm)	2-5/16" (59 mm)	1/2" (13 mm)	25/32" (20 mm)	2-27/32" (72 mm)	1795 lbs (816 kg)	2160	8	80

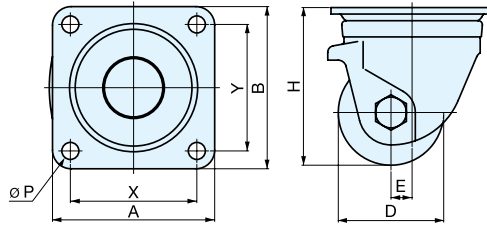
*Please specify wheel type when ordering.

LOW PROFILE HEAVY DUTY CASTERS

LOW PROFILE HEAVY DUTY CASTER



HG



- Low profile and heavy duty up to 255 kg (561 lbs), ideal for manufacturing equipment.
- Hardened frame for maximum rigidity and strength.
- Sealed ball bearing swivel assembly provides smooth and long-term service.
- Hexavalent chromium free. Using trivalent chromium for RoHS compliance.
- Two wheel types:
 - Phenolic
 - Reinforced Nylon with ball bearing spindle
- Wheel brake available on special order.

Part Name	Material	Finish
Body	Steel	Clear Zinc Chromate (Trivalent Chromium)
Mounting Plate		
Wheel	Reinforced Nylon(GNB)	Black
	Phenolic Resin(PB)	

Item No.	Bearing in wheels	D	Wheel Width	H	A	B	X	Y	P	E	Swivel Radius	Load Capacity	Weight (g)	Box (pcs)	Carton (pcs)
HG-50GNB	Without Bearing	1-31/32" (50 mm)	1-3/32" (28 mm)	2-11/16" (68 mm)	1-31/32" (50 mm)	1-31/32" (50 mm)	2-17/32" (64 mm)	2-17/32" (64 mm)	1/4" (6.5 mm)	31/32" (25 mm)	2"	359 lbs (163 kg)	320	36	600
HG-65PB	With Bearing	2-9/16" (65 mm)	1-1/2" (38 mm)	3-5/8" (92 mm)	3-17/32" (90 mm)	3-17/32" (90 mm)	2-13/16" (71 mm)	2-13/16" (71 mm)	13/32" (10.5 mm)	7/8" (22 mm)	2-1/4" (57 mm)	675 lbs (306 kg)	880	20	200
HG-75PB		2-15/16" (75 mm)	1-1/2" (38 mm)	4-5/32" (106 mm)	3-17/32" (90 mm)	3-17/32" (90 mm)	2-13/16" (71 mm)	2-13/16" (71 mm)	13/32" (10.5 mm)	7/8" (22 mm)	2-13/32" (61 mm)	719 lbs (326 kg)	970	20	120