

DISK DAMPER

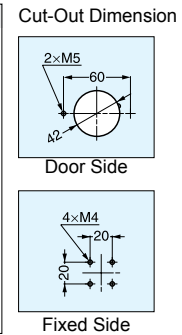
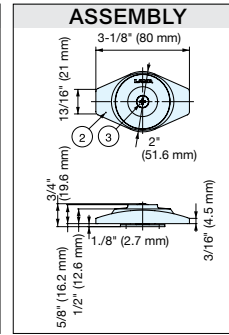
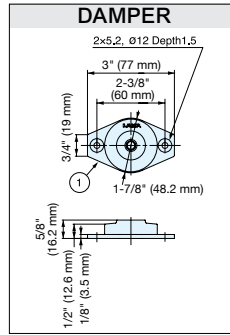
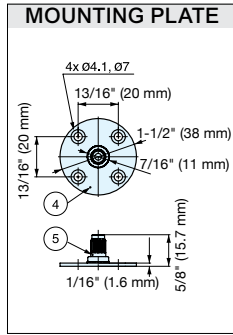
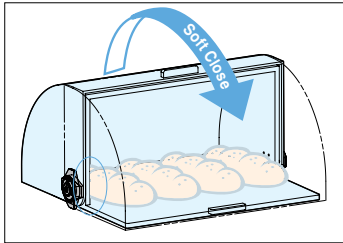


UDD

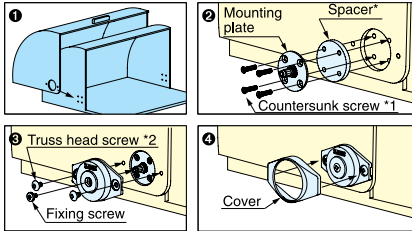
LID SUPPORTS

DISK DAMPERS

- Disc-shaped damper gently closes lid without slamming shut.
- Narrow profile for unobtrusive installation.
- Suitable for food service environments.
- Successfully passed 30,000 open/close private cycle test.
- Operating temperature: 5~35 °C (41~95°F)
- Spacer and installation screws are not included, and vary with application. Please contact customer service for more information.

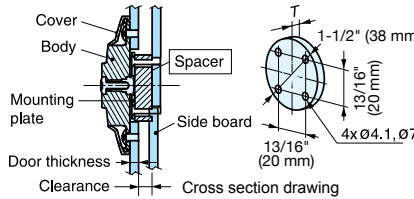


How to Install



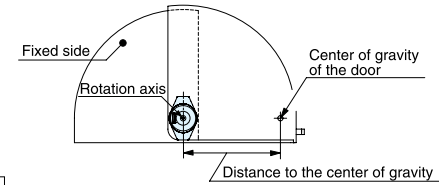
*1, *2 screws and Spacer are not included.

Spacer



$$\text{Spacer thickness (T)} = \text{Clearance mm} + \text{Door thickness mm} - 2.7 \text{ mm}$$

Damper Selection



$$\text{*Torque} = \text{Distance to the center of gravity} \times 1/2 \times \text{Door weight}$$

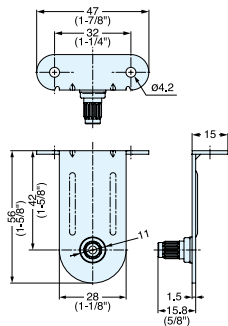
Item No.	Handing	Torque	Weight (g)	Box Qty (pcs)
UDD-S-L	Left	4.4~8.9 lbs-in (5.1~10.2 kgf-cm)	90	20
UDD-S-R	Right			
UDD-M-L	Left	8.9~17.7 lbs-in (10.2~20.4 kgf-cm)		
UDD-M-R	Right			
UDD-H-L	Left	17.7~26.6 lbs-in (20.4~30.6 kgf-cm)		
UDD-H-R	Right			

No.	Part Name	Material	Finish
①	Main Body	ABS Plastic	Light Grey
②	Cover		
③	Screws	Steel	Nickel
④	Mounting Plate		Zinc
⑤	Axis		

UDD DISK DAMPER BRACKET

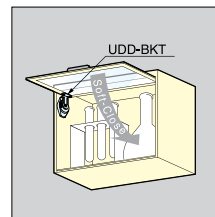


UDD-BKT

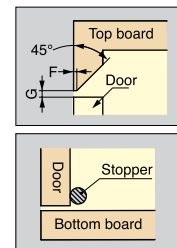
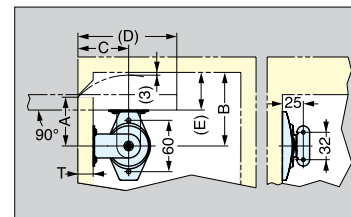


- Bracket for disk damper UDD for upward-opening door.
- Catch is needed for holding door in opened position (not included).
- Use SDS-50G face plate for glass/acrylic door.
- Stop required to prevent over rotation (not included).

Application Example



Cut-Out Dimension



Item No.	Material	Finish
UDD-BKT	304 Stainless Steel	Plain

T: Door Thickness	A	B	C	D	E	F	G
3/16" (5 mm)	1-13/16" (46 mm)	2-3/4" (70 mm)	1-15/16" (49 mm)	3-3/4" (95 mm)	1-1/32" (26 mm)	1/32" (1 mm)	1/8" (3 mm)
19/32" (15 mm)	2-1/8" (54 mm)	3-1/4" (82 mm)	2-1/4" (57 mm)	4-3/8" (111 mm)	1-9/16" (40 mm)	1/16" (2 mm)	5/32" (4 mm)
23/32" (18 mm)	2-1/4" (57 mm)	3-3/8" (86 mm)	2-3/8" (60 mm)	4-5/8" (117 mm)	1-3/4" (44 mm)	1/8" (3 mm)	3/16" (5 mm)