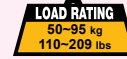


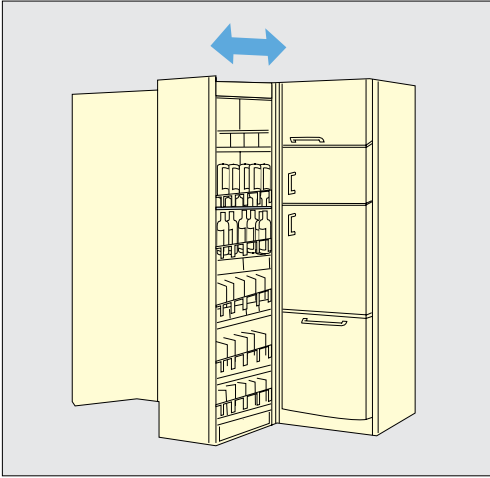
# FULL EXTENSION SLIDE



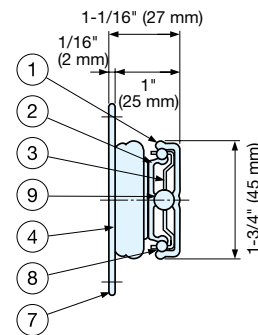
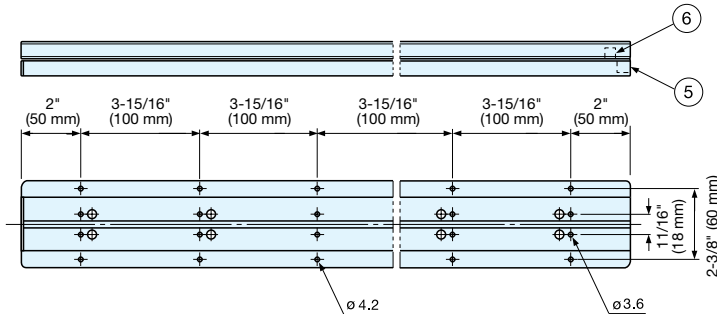
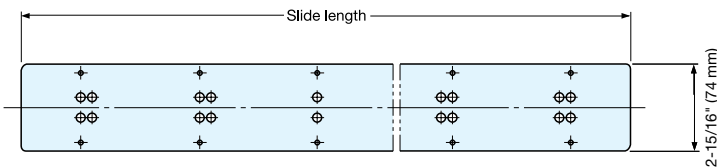
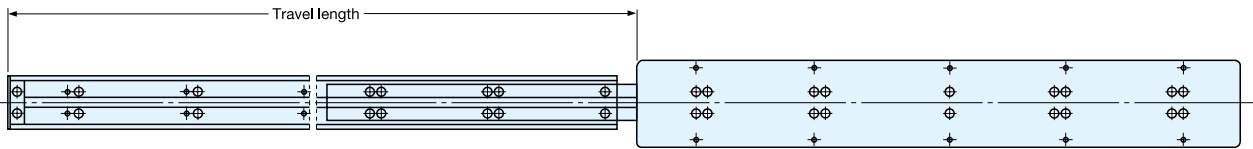
# TSS-3

DRAWER SLIDES

FULL EXTENSION SLIDES



- Full extension.
- Positive stop.
- Non-handed.
- Heavy duty.
- Sold by each.



25.4 mm=1"

No.	Part	Material
①	Outer Rail	304 Stainless Steel
②	Inner Rail	
③	Retainer	Polyamide
④	End Stopper	
⑤	Outer Guide	Polyacetal
⑥	Inner Guide	
⑦	Plate	304 Stainless Steel
⑧	Large Balls	Steel
⑨	Small Balls	

Item No.	Slide Length	Travel Length	# of Holes	Load Rating /pair	Weight (g)	Box (pcs)
TSS-3-300	11-13/16" (300 mm)	13-7/32" (336 mm)	6	209 lbs (95 kg)	1380	4
TSS-3-400	15-3/4" (400 mm)	17-5/32" (436 mm)	8	198 lbs (90 kg)	1860	
TSS-3-500	19-11/16" (500 mm)	21-3/32" (536 mm)	10	187 lbs (85 kg)	2390	
TSS-3-600	23-5/8" (600 mm)	25-1/32" (636 mm)	12	176 lbs (80 kg)	2880	
TSS-3-800	31-1/2" (800 mm)	32-29/32" (836 mm)	16	143 lbs (65 kg)	3790	
TSS-3-1000	39-3/8" (1000 mm)	40-25/32" (1036 mm)	20	110 lbs (50 kg)	4710	